



JAPAN GIFU

AEROSPACE
INDUSTRIES

2024



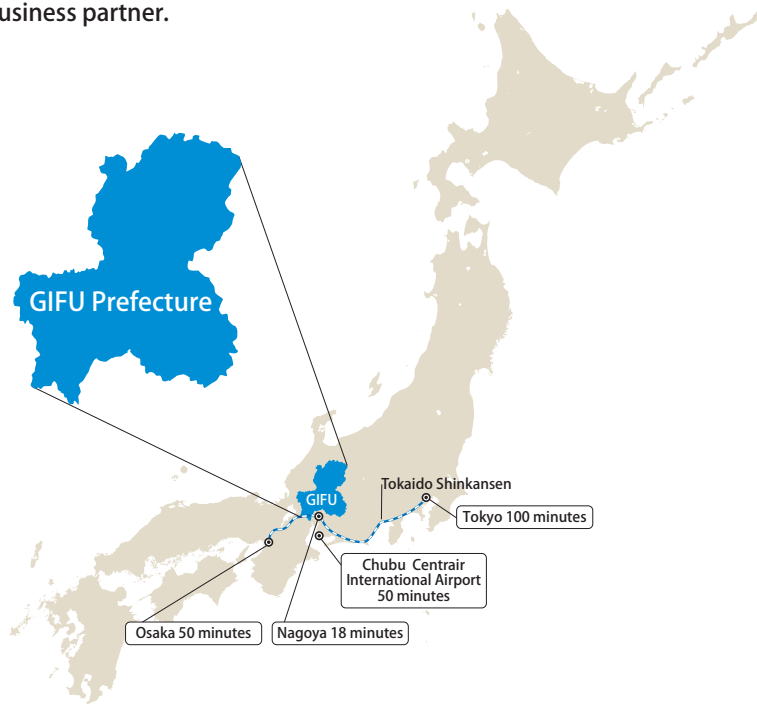
Gifu Prefecture

Gifu Prefecture's aerospace industry

Gifu prefecture is in the central part of Japan, giving us an advantage in facilitating networking among people and creating an integrated transport hub around the country.

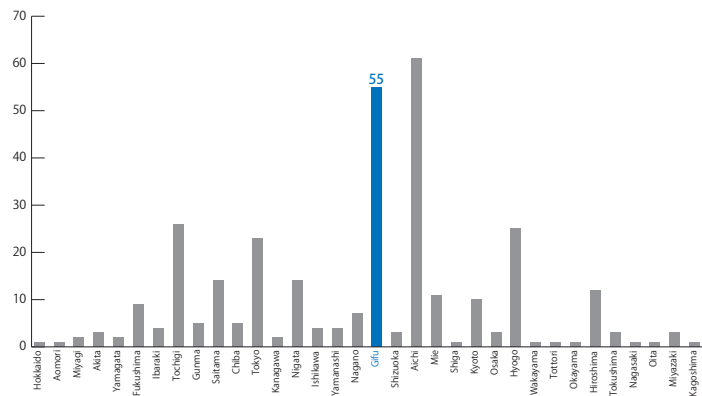
Gifu Prefecture's aerospace industry is regarded as being in the 2nd most business places, the 2nd most employees and the third largest product shipments by prefecture nationwide (2021 Economic census)

The industry has 55 business sites and contributes greatly to the development of Chubu-region Aerospace industry. This pamphlet lists attractive aerospace enterprises in Gifu Prefecture. Please take advantage of this when looking for a new business partner.

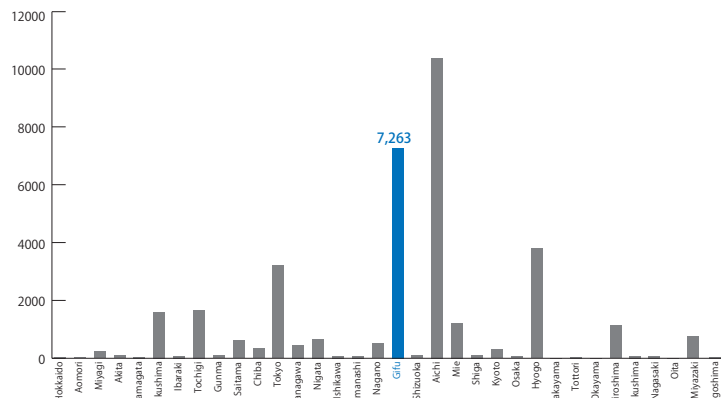


● **Product shipment amount: 254.3 billion yen(3rd place by prefecture nationwide)**

● **Number of business sites: 55 (2nd place by prefecture nationwide)**



● **Number of employees: 7,263 (2nd place by prefecture nationwide)**

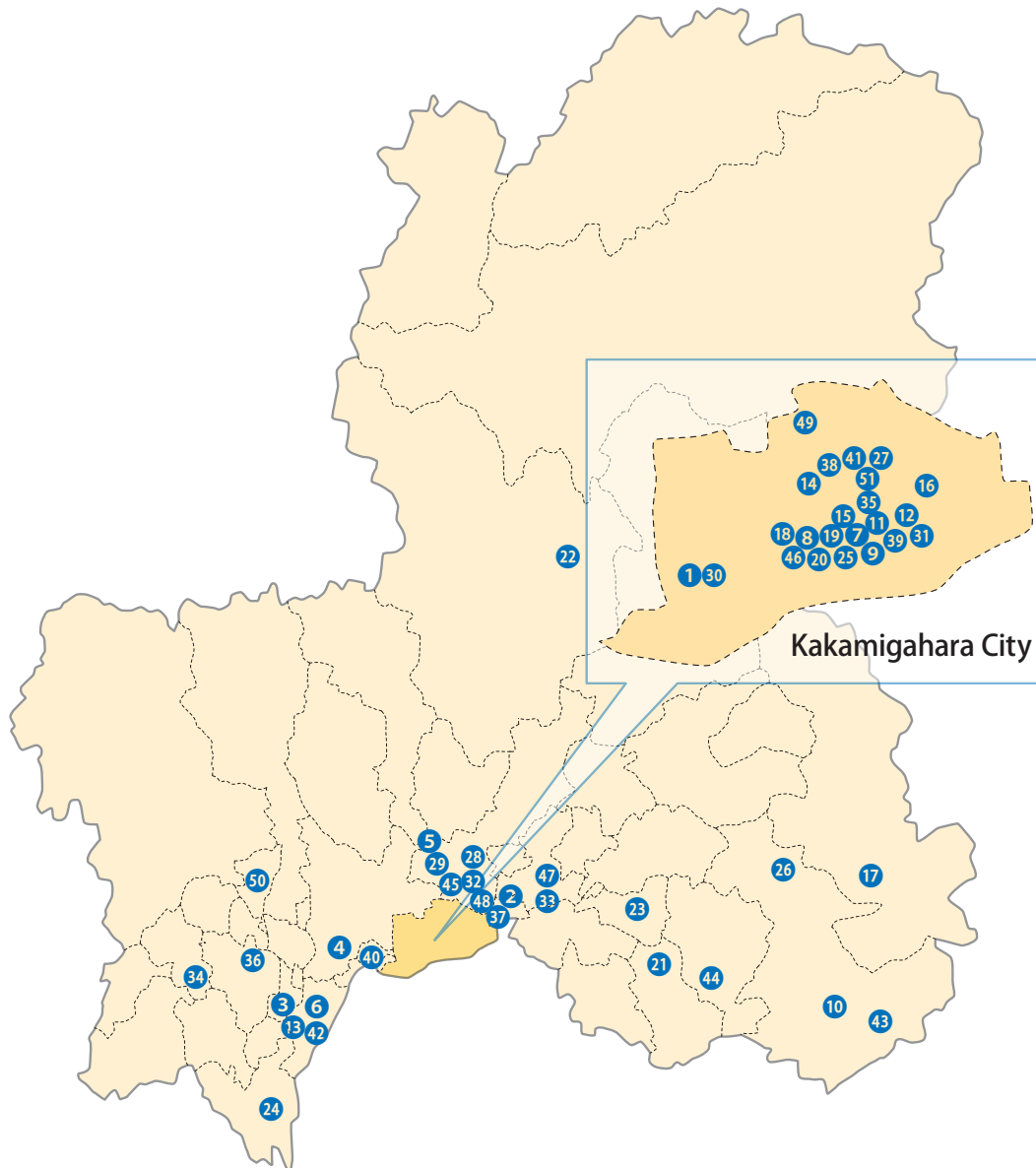


2021 Economic census

Aerospace companies in Gifu Prefecture

P	Company name	Assembly/ Subassembly	Machining	Jig and tool production	Sheet metal forming	Heat treatment	Surface treatment	Composite material manufacturing	Painting	Others
1	IAC Corporation	○	○	○			○		○	
2	Aoi Koki CO., LTD.		○	○	○					
3	Asahi Kinzoku Kogyo Inc.(Gifu Anpachi Plant)	○	○	○			○	○	○	
4	IWAI INDUSTRIES CO., LTD.	○	○	○	○					
5	IWATA MFG. CO., LTD.		○		○					
6	IWATA MACHINERY WORKS LTD.		○	○						
7	Iwado Industry Co., Ltd.	○			○				○	
8	Wing Field Co., Ltd.	○	○	○	○	○	○	○	○	Development/Production of aeroequipment
9	APC AEROSPECIALTY INC.(Gifu Plant)	○	○	○					○	Sewing products (interior goods) , support equipment
10	ENA KIKI Co.,Ltd.	○	○							
11	Enomoto BeA Co.,Ltd.		○	○						
12	"MHI AEROSPACE PRODUCTION Co., LTD. (Kakamigahara cross dock center) "									Transportation
13	Otake Mfg.Co.,Ltd		○							
14	Ohori Grinding Company									Grinding
15	Kakamigahara Aero Equipment Co.,Ltd.			○						Wire Harness processing
16	Kato Manufacturing Co.,Ltd. (Kakamigahara)		○	○						
17	KATO MFG CO.,LTD.(Nakatsugawa)	○			○					
18	Kawasaki Gifu Co-operative Society	○	○	○	○	○	○	○	○	
19	"Kawasaki Heavy Industries,Ltd. Aerospace Systems Company"	○	○	○	○	○	○	○	○	
20	Kawaju Gifu Engineering co., Ltd.									Aircraft R&D, design, testing, ME, IT, etc.
21	Metal Technology Co., Ltd.(Toki Plant)		○	○	○	○				Superplastic forming, Water jet cutting, Metal additive manufacturing
22	GUJORASHI Co., LTD		○							
23	KOSAKA IRON WORKS CO., LTD.(Mitake Plant)		○							
24	Kondo Giken Co., Ltd.		○							
25	Sunwa Trading Corporation							○		Trading company
26	SUMINOSEISAKUSHO		○	○						
27	SEIWA INDUSTRY CO., LTD.	○	○		○					Piping parts
28	Chubu Heat treatment CO., LTD.					○				
29	Tsukada Co., Ltd.				○			○		
30	TOKUDA INDUSTRY CO., LTD.	○	○	○						
31	TOBAKOSAN CO., LTD.		○	○	○	○				
32	Collage of Naka-Nippon Aviation									Aviation human resources education
33	NAGOJI IRON WORKS Ltd.		○	○						
34	Nabtesco Corporation(Gifu Plant)	○	○	○ designing only		○	○		○	
35	NABEYA MFG CO., LTD.	○	○	○						
36	NICHIDEN SEIMITSU KOGYO CO.,LTD.	○	○	○	○		○			Electrical discharge machining, laser processing
37	Nippon Press Industries Co., LTD	○	○						○	
38	HAYAKAWA INDUSTRIES CO., LTD.	○	○		○					
39	HAYASHITERU INDUSTRY	○	○	○	○				○	Precision Welding
40	HIKARI MANUFACTURE CO., LTD.		○	○						
41	VR Techno Center Inc.									Human resource development

P	Company name	Assembly/ Subassembly	Machining	Jig and tool production	Sheet metal forming	H e a t treatment	Surface treatment	Composite material manufacturing	Painting	Others
42	FUJI ENGINEERING CO., LTD(Gifuhashima site)	○		○						
43	Fujiwatech Ltd.		○							
44	MIZUNAMI SEIKI CO., LTD.	○	○	○						
45	MIZUNO METAL WORKS CO., LTD.	○	○	○						
46	Mitsuwa Co., Ltd.(Gifu office)									Aircraft design technology
47	MEIHOKU KOGYO CO., LTD									Material sales, NDI
48	MEIRA Corporation(Seki Plant)	○	○	○		○	○		○	
49	Yashima co., ltd.	○	○	○	○			○		
50	YOSHITECH CO.,LTD.			○						
51	wako co.,Ltd.	○	○	○	○					Laser cutting



Aerospace Company Locations in Gifu Prefecture



IAC Corporation

1

Technical Field	Assembly/ Subassembly	Machining	Jig and tool production	Sheet metal forming	Heat treatment	Surface treatment	Composite material manufacturing	Painting	Others
	○	○	○			○		○	

Main Businesses

- Manufacture of aerospace machined parts and aircraft assemblies
- Design, development, and manufacture of GSE for aircraft

Strength

- We support integrated production from material purchasing to surface treatment.
We also have many NC processing machines and process up to 18m.

Certifications

ISO 9100, ISO 9001, Nadcap(NDT(PI), CP, SE(Shot Peening))

Facilities

3-axis NC processing machines: 43 units, 4-axis NC processing machines: 19 units,
5-axis processing machines: 81 units, CATIA: 40 units, CAD/CAM: 2 units, CMM: 9 units,
Laser Tracker: 4 units



Headquarter



5-axis processing machine SNK RB200F

A d d r e s s	128 Kinzokudanchi, Kakamigahara, Gifu 504-0957, Japan
T e l	+81-58-389-2011
U R L	https://www.imaiaero.co.jp
E s t a b l i s h m e n t	May 1947
R e p r e s e n t a t i v e	NEGISHI Toshiyuki, President and CEO
C a p i t a l	JPY 96million
E m p l o y e e s	190
C o n t a c t p e r s o n	FUJIYOSHI, Business Dept.
T e l	+81-58-380-0246
E - m a i l	iac@imaiaero.co.jp

company
website





Technical Field	Assembly/ Subassembly	Machining	Jig and tool production	Sheet metal forming	Heat treatment	Surface treatment	Composite material manufacturing	Painting	Others
		○	○	○					

Main Businesses

- Sheet Process of aluminum parts
- Plane process of aluminum sheet by machining Center
- Cut process by Water jet

Strength

- "Remove distortion"
Since our founding, we have processed by hand, relying on the senses and textures that come through our hands. We are a professional group of aluminum sheet metal craftsmen.
- "Any material"
With using three water jet processing machines, we process high quality, short delivery times, and low prices for difficult-to-cut materials such as CFRP, metals, glass, and rubber.
- "Try it first!"
We always approach our work with a spirit of challenge and provide suggestions that will lead to increased customer satisfaction.
- In June 2018, we introduced our third water jet processing machine and increased our production capacity. Based on the know-how we have cultivated over many years, we have a good reputation for processing difficult-to-cut materials and micro-machining.

Certifications

JIS Q 9100, JIS Q 9001

Facilities

Water jet processing Machine 3units Vertical Machining Center 1unit NC lathe 2units



bottom Left : titan (t10.0) top Right : A5052 (t20.0)
bottom Right : SUS304 (t25.0)



Left : CFRP (t15.0) Right : GFRP (t15.0)

cutting process examples

A d d r e s s	566-2 Ohari, Sakahogi-cho, Kamo-gun, Gifu 505-0072, Japan
T e l	+81-574-25-7089
U R L	https://www.aoikoki.co.jp
Establishment	Dec. 1980
Representative	NODO Satoshi, President and CEO
C a p i t a l	JPY 10million
E m p l o y e e s	10
Contact person	NODO Satoshi, President and CEO
T e l	+81-574-25-7089
E - m a i l	info@aoikoki.co.jp

company
website





Asahi Kinzoku Kogyo Inc.

3

Technical Field	Assembly/ Subassembly	Machining	Jig and tool production	Sheet metal forming	Heat treatment	Surface treatment	Composite material manufacturing	Painting	Others
	○	○	○			○	○	○	

Main Businesses

- Manufacture of aerospace equipment
- Production of nuclear fusion/accelerator parts

Strength

- We specialize in manufacturing parts for aerospace equipments and are characterized by integrated processing with combining pre and post processes with special processes as the core.
- With support from NEDO and other organizations, we are conducting R&D endeavors on thermoplastic molding and injection molding of aircraft parts.
- We have obtained international certifications such as Nadcap/AS9100 and those issued by major aircraft manufacturers.

Certifications

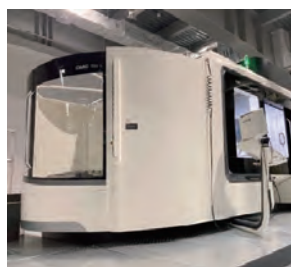
AS 9100, AS 9110, Nadcap : NDT,SE,CE,CT

Facilities

- Machining/Lathe processing
- 37 types of special processes: penetrant inspection, magnetic inspection, three-dimensional measurement inspection, shot peening, HVOF, plasma spraying, passivation treatment, chemical conversion treatment, anodization treatment, various plating, painting
- SUB assembly



Gifu Anpachi-minami plant



5 axis machining center with vertical lathe



Vertical lathe

A d d r e s s	【Head Quarter】 503, Shimomaruya-cho, Nishi-iru, Chieko-in, Shimodachiuri-dori, Kamigyo-ku, Kyoto, Japan 602-8176 【Gifu Anpachi Plant】 4851-4 Shinnagata, Maki, Anpachi-cho, Anpachi-gun, Gifu 503-0125, Japan
T e l	+81-584-64-5061
U R L	https://www.akg.co.jp
Establishment	June 1948
Representative	TAMANAKA Yasuhiro, President and CEO
C a p i t a l	JPY 99.5million
E m p l o y e e s	327
Contact person	SHIGA, Sales Dept.
T e l	+81-584-64-5061
E - m a i l	jshiga@akg.co.jp

company
website





IWAI INDUSTRIES CO., LTD.

Technical Field	Assembly/ Subassembly	Machining	Jig and tool production	Sheet metal forming	Heat treatment	Surface treatment	Composite material manufacturing	Painting	Others
	○	○	○	○					

Main Businesses

Assembly of aircraft parts

- Assembly of keel beams and stringers for Boeing 777 aircraft
- Assembly of keel beams for Boeing 787 aircraft
- Assembly of wing stubs for Embraer 170 aircraft

Strength

- Over 40years achievement and experience in assembling aircraft structural parts
- Machining and sheet metal processing of general parts.
- Speedy and flexible customer service.
- Flexible service for small lot orders.
- Economical and proper price.
- Satisfying after-sales service.

Certifications

JIS Q 9100

Facilities

- Numerically Controlled Stringer Assembling Machine 1 unit
- Numerically Controlled Drilling Machine 1 unit
- Fiber Laser Cutting Machine 1 unit
- Vertical Machining Center 1 unit



Seki plant



Assembly Area of Aircraft Parts

A d d r e s s	3-14-7 Ichihashi, Gifu, Gifu 500-8381, Japan
T e l	+81-575-23-7028
U R L	https://www.iwai-ind.co.jp
Establishment	June 1964
Representative	IWAI Takayuki, President & CEO
C a p i t a l	JPY 40million
E m p l o y e e s	100
Contact person	Takano, General Affairs Dept.
T e l	+81-575-23-7028
E - m a i l	takano-yoshihiro@iwai-ind.co.jp



Technical Field	Assembly/ Subassembly	Machining	Jig and tool production	Sheet metal forming	Heat treatment	Surface treatment	Composite material manufacturing	Painting	Others
		○		○					

Main Businesses

- **【For aerospace industries】** Manufacture/sales of laminated shims and solid shims
- **【For industrial machinery industries】** Standardized over 40,000 machine element parts, safety products and painting jigs.

Strength

- **【Laminate shim, solid shim】**
 A laminate shim is made by bonding thin plates together with adhesive and its thickness can be adjusted by peeling the plates off.
 Both laminate shims and solid shims can be custom-made starting from one piece based on the customer's drawings using various processing equipment.
 Due to our abundant material inventory, we can offer short delivery times of minimum 3 days.
 Our unique system is suitable for high-mix, low-volume production, allowing us to handle over 300 types per day.
 Through traceability management, we are also able to issue various certificates such as material certificates and inspection reports.
- **【Machine element parts, safety products, painting jigs】**
 We ship over 40,000 standard items on the same day, starting from one piece. We save customers' time incurred for designing and manufacturing.

Certifications

ISO 9001, ISO 14001, JIS Q 9100

Facilities

We have a wide range of facilities for sheet metal processing and cutting. Press machines, laser processing machines, brake presses, various burr processing machines, NC lathe, NC compound lathe, machining center, general-purpose lathe, general-purpose milling machine and some various specialized processing machines.



Headquarter



Solid shim, Laminate shim

Address	923-1 Ikejiri, Seki, Gifu 501-3264, Japan
Te l	+81-575-23-6161
U R L	https://www.iwata-fa.jp
Establishment	1966
Representative	IWATA Shuzo, President & CEO
C a p i t a l	JPY 99.12million
E m p l o y e e s	125
Contact person	MUTO, Sales Section
T e l	+81-575-23-6161
E - m a i l	info@iwata-fa.jp

company website





IWATA MACHINERY WORKS LTD.

6

Technical Field	Assembly/ Subassembly	Machining	Jig and tool production	Sheet metal forming	Heat treatment	Surface treatment	Composite material manufacturing	Painting	Others
		○	○						

Main Businesses

- Precise cutting process for main parts of chip mounters that attach electronic parts to printed circuit boards and main parts of anti-vibration devices for high-rise buildings.
- Prototype processing mainly for aerospace parts

Strength

- We are capable of cutting difficult-to-cut materials such as carbon steel and duralumin, as well as titanium and Inconel with our approximately 100 machine tools, including NC lathes, machining centers, and 5-axis processing machines.
- We have introduced high-spec CAD/CAM in order to handle aerospace parts, and can process 3D-shaped products with many free-form surfaces using simultaneous 5-axis machining.
In constant temperature environment, we guarantee the quality of processed products with using a 3D measuring machine.
- We also have a wide range of processing machines such as wire cutting and laser markers, and we receive requests for prototype processing nation wide.
Cylindrical polishing, centerless polishing, surface treatment, heat treatment, etc. can also be performed by our partner companies.

Certifications

JIS Q 9100

Facilities

5-axis machining center YASDA PRECISION TOOLS PX30i 1 unit 5-axis machining center MITSUI SEKI Vertex550-5x 1 unit Horizontal machining center YASDA PRECISION TOOLS HU50A 1 unit
Vertical machining center JTEKT FV1165S 1 unit Small machining center FUNAC αT21iE series 11 units
CNC compound lathe OKUMA MULTUS B400II 1 unit Coordinate measuring machine TOKYO SEIMITSU XYZAX SVA NEX 9/10/6 1 unit 3DC/CAD/CAM HYPER MILL OPEN MIND 1 unit



Headquarter



Cutting parts (duralumin)



Airplane model
(from original data to production)

A d d r e s s	319 Arai, Masaki-cho, Hashima, Gifu 501-6225, Japan
T e l	+81-58-392-4525
U R L	https://itk.co.jp
Establishment	Sept. 1979 (started business in 1954)
Representative	IWATA Shintaro, President & CEO
C a p i t a l	JPY 10million
E m p l o y e e s	40
Contact person	YAMASHITA, Production Dept.
T e l	+81-58-392-4525
E - m a i l	t.yamashita@itk.co.jp

company
website



Iwado Industry Co., Ltd.

7

Technical Field	Assembly/ Subassembly	Machining	Jig and tool production	Sheet metal forming	Heat treatment	Surface treatment	Composite material manufacturing	Painting	Others
	○			○				○	

Main Businesses

- Airframe parts assembly
- Bus body parts manufacturing
- Bus/truck bodywork/renovation
- Construction machinery/machine tool parts production/painting
 <main airframe products >B787: Pressure deck, B767: Large cargo door, BK117, C-2, P-1

Strength

- Since 1966, we have been providing aircraft assembly technology.
 Because our products are related to human life, we meet the strict standards and high quality required.

Certifications

JIS Q 9100, ISO 9001

Facilities

4-axis CNC drill machine 1 unit



Headquarter



4-axis CNC drill machine

A d d r e s s	2-10, Unuma, Kawasaki-cho, Kakamigahara, Gifu 509-0147, Japan
T e l	+81-58-383-8111
U R L	https://www.iwado.co.jp
Establishment	July 1957
Representative	INOUE Tsuyoshi, President and CEO
C a p i t a l	JPY 45million
E m p l o y e e s	176
Contact person	SHINPO, General Affairs Section
T e l	+81-58-383-8111
E - m a i l	shinpo@iwado.co.jp

company website





Wing Field Co., Ltd.

8

Technical Field	Assembly/ Subassembly	Machining	Jig and tool production	Sheet metal forming	Heat treatment	Surface treatment	Composite material manufacturing	Painting	Others
	○	○	○	○	○	○	○	○	○

Others: Development/Production of aeroequipment

Main Businesses

- Processing of metal parts for aircraft
- Processing of composite parts for aircraft
- Airstructure assembly, airframe repair
- Design, development, and manufacture of equipment (aircraft seats, containers, etc.)

Strength

- Upon customers' drawings and specifications, we are able to perform integrated processing on parts fabrication and assembly from process design, tool production, and part molding to special process.
- In terms of quality assurance, We are certified JIS Q 9100 and JIS Q 9001 and achieving global standardization of quality and a strict management system.

Certifications

JIS Q 9100 , JIS Q 9001 (ISO 9001) , Nadcap (Heat Treatment, NDT, Chemical Processing, Composite)

Facilities

Chroic Acid / Boric and Sulfuric Acid Anodizing Line 1EA (2.5m x 1.0m x 1.0m)

Colored Chemical Conversion Coating Line 1EA (2.5m x 1.0m x 1.0m)

Heat Treat Furnace 2unit (max : 3.1m x 1.3m x 2.2m)

Painting booth 4unit、Autoclave 2unit



Headquarter



Welding process



Painting process

A d d r e s s	1-1, Sohara, Koamachi, Kakamigahara, Gifu 504-0814, Japan
T e l	+81-58-382-6431
U R L	https://www.wingf.co.jp
Establishment	Oct. 2009
Representative	MASAI Kei, President and CEO
C a p i t a l	JPY 95million
E m p l o y e e s	219
Contact person	NISHINOHARA, Sales section
T e l	+81-58-382-4123
E - m a i l	nishinohara.j@wingf.co.jp

company
website



APC AEROSPECIALTY INC.

Technical Field	Assembly/ Subassembly	Machining	Jig and tool production	Sheet metal forming	Heat treatment	Surface treatment	Composite material manufacturing	Painting	Others
	○	○	○					○	○

Others:Sewing products (interior goods) ,support equipment

Main Businesses

- Aircraft parts packaging/rust-proof standard packaging
- Contract for assembly, repair, cleaning, and painting of aircraft bodies
- Contract for electrolytic processing of aircraft engine parts
- Manufacture and sales of electrolytic processing machines
- Manufacture and sales of deburring equipment (ECD, ROSDEM)
- Manufacture and sales of various containers for transporting precision equipment
- Manufacture and sales of metal vibration damping devices (isolators)

Strength

- Utilizing specialized technologies, we provide technical services and consultants for especially three fields such as aircraft manufacturing support business, packaging business, and manufacturing and sales business.
- As a group of creative engineers playing important role in the aerospace industry, we are always actively engaged in technological development.

Certifications

JIS Q 9100, JIS Q 9001 (ISO9001), JIS Q14001 (ISO14001)

Facilities

Machining centers 9units
 5-axis machining centers 2units
 NC lathes 5units Paint drying booths 3units
 Electrolytic processing machines 7units
 Coordinate measuring instruments 4units
 Automatic cutting machine 1unit



Kakamigahara Plant



Container for Satellite transporter



Rotary Stream Deburring Machine



Electrochemical Deburring Machine



Helical Isolator

A d d r e s s	【Head Quarter】 1-8-15, Iwamoto-cho, Chiyoda-ku, Tokyo 101-0032, Japan 【Gifu Plant】 4-26 Unumaasahi-machi, Kakamigahara, Gifu 504-0145, Japan
T e l	+81-58-370-5711
U R L	https://www.apc-aero.co.jp
E s t a b l i s h m e n t	Dec. 1957
R e p r e s e n t a t i v e	YAMASHITA Ichiro, President & CEO
C a p i t a l	JPY210million
E m p l o y e e s	377
C o n t a c t p e r s o n	IMAI, Sales Section
T e l	+81-58-370-5711
E - m a i l	apc-gifusales1@apc-aero.co.jp

company website





Technical Field	Assembly/ Subassembly	Machining	Jig and tool production	Sheet metal forming	Heat treatment	Surface treatment	Composite material manufacturing	Painting	Others
	○	○							

Main Businesses

- Machining and sub-assembly of aerospace parts
- Machining of parts for semiconductor manufacturing equipment

Strength

- We specialize in precision machining of small and medium items, and handle processing of aluminum, difficult-to-cut materials, forged products, round materials, and plate materials, from single items to mass production.
- Since our founding in 1967, we have responded to all of our customers' needs with our technological capabilities and quality assurance system.

Certifications

JIS Q 9100, JIS Q 9001

Facilities

5-axis machining center 3units 4-axis machining center (horizontal) 11units
 4-axis machining centers (vertical) 17units Compound lathes 2units NC lathes 13units
 Precision lathes 9units Milling machines 3units Coordinate Measuring Machine 1unit



Headquarter



Machining center

A d d r e s s	2453-22 Yatsubo, Iwamura-cho, Ena, Gifu 509-7403, Japan
T e l	+81-573-43-0025
U R L	http://www.enakiki.co.jp
E s t a b l i s h m e n t	Oct. 1967
R e p r e s e n t a t i v e	IMAI Hidehiko, President & CEO
C a p i t a l	JPY 45million
E m p l o y e e s	66
C o n t a c t p e r s o n	SAKAGAMI, Sales Dept.
T e l	+81-573-43-0025
E - m a i l	sakagami@enakiki.co.jp

company website



Enomoto BeA Co.,Ltd.

11

Technical Field	Assembly/ Subassembly	Machining	Jig and tool production	Sheet metal forming	Heat treatment	Surface treatment	Composite material manufacturing	Painting	Others
		○	○						

Main Businesses

- Manufacture of aerospace-related components and design, produce, fixtures for machining.
- Develop, design, manufacturer and provide machine protection products.
- Research, develop, manufacture and provide environment-related projects and products.

Strength

- We stand out amongst our competitors by specializing in many state of the art double column machining centers and large sized 3-axis and 5-axis machines.
- We currently have a sufficient number of skilled NC programmers and can react quickly to increase CAD/CAM (CATIA) systems when necessary.
- Due to our 70 years of accumulated experience in the aerospace industries, our excellent technology to perform highly difficult precision manufacturing and quality assurance systems are highly appreciated by leading heavy industries.
- We develop our own machine protection products including (chip conveyors and telescopic way covers) which lead the market with a share of over 30% in Japan.
- We locate in Kakamigahara, Gifu which is a major aerospace industry center in the Tokai district.

Certifications

JIS Q 9100, ISO 9001

Facilities

5-axis machining center 29units

4-axis machining center 4units

3-axis machining center 28 units



Toumon No.3 Factory



Machining center
(DMG Mori Seiki 5-axis MC DMU340 Gantry)

A d d r e s s	5-10, Soharakoamachi, Kakamigahara, Gifu 504-8551, Japan
T e l	+81-58-389-7433
U R L	https://www.enomotoweb.com
Establishment	May 1954 (started business in 1951)
Representative	ENOMOTO Naohiro, President & CEO
C a p i t a l	JPY10million
E m p l o y e e s	270
Contact person	HASHIMOTO, General Affairs Dept.
T e l	+81-58-383-2178
E - m a i l	shashimoto@enomotoweb.com

company
website





MHI AEROSPACE PRODUCTION Co., LTD.

12

Technical Field	Assembly/ Subassembly	Machining	Jig and tool production	Sheet metal forming	Heat treatment	Surface treatment	Composite material manufacturing	Painting	Others
									Transportation

Main Businesses

- Truck transportation
- Aircraft parts acceptance inspection and temporary storage
- Temporary storage of aircraft materials

Strength

- As a wholly owned subsidiary of Mitsubishi Heavy Industries, all employees fully understand how to handle aircraft parts.
- By taking advantage of Kakamigahara's geographical advantage, we aim to act as a bridge between Kawasaki Heavy Industries and aircraft processing partners.

Certifications

JIS Q 9100

Facilities

We have a warehouse of approx.500 square meters and established a daily regular transportation network to Mitsubishi Heavy Industries and Kawasaki Heavy Industries.



Kakamigahara cross dock center



transport truck

A d d r e s s	【Head Quarter】 10 Oye, Minato-ku, Nagoya, Aichi 455-0024, Japan 【Kakamigahara cross dock center】 2-3-5 Unumaasahimachi, Kakamigahara, Gifu 509-0415, Japan
T e l	+81-52-611-9591
U R L	https://www.mhi.com/jp/group/map/
E s t a b l i s h m e n t	July 1990
R e p r e s e n t a t i v e	YAMAMOTO Akihiko, President & CEO
C a p i t a l	JPY20million
E m p l o y e e s	approx. 700
C o n t a c t p e r s o n	IKEGAKI, Transportation Section
T e l	+81-90-1234-7855
E - m a i l	masahiro.ikegaki.cy@mhi.com

company website



OTAKE Otake Mfg.Co.,Ltd

13

Technical Field	Assembly/ Subassembly	Machining	Jig and tool production	Sheet metal forming	Heat treatment	Surface treatment	Composite material manufacturing	Painting	Others
		○							

Main Businesses

- Manufacture and sales of automobile parts
- Manufacture and sales of aerospace and defense equipment parts
- Manufacture and sales of electronic parts

Strength

- With creative and flexible ideas that are not bound by fixed concepts, we are working on processing high-precision parts.
- We achieve short delivery times by maintaining processing accuracy even for small lots, prototypes, and evaluation products.

Certifications

JIS Q 9100, JIS Q 9001

Facilities

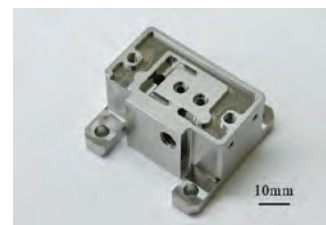
3 axes Machining center: 3 units 5 axes Machining center: 1 unit Compound lathe: 6 units
 5 axes Compound lathe: 1 unit NC lathe: 8 units Electric discharge machine: 1 unit
 Wire electrical discharge machine: 2 unit



Headquarter



Industrial machinery parts
(A5056)



Electronic/communication
equipment parts (Kovar)

A d d r e s s	103 Hottsucho sukanaka, Hashima, Gifu 501-6338, Japan
T e l	+81-58-398-1623
U R L	http://www.mirai.ne.jp/~otk/
E s t a b l i s h m e n t	Dec. 1965
R e p r e s e n t a t i v e	OTA EIJI, President & CEO
C a p i t a l	JPY 25million
E m p l o y e e s	8
C o n t a c t p e r s o n	IRIYAMA, Plant Manager
T e l	+81-58-398-1623
E - m a i l	otake-s@ccn4.aitai.ne.jp

company
website





Ohori Grinding Company

14

Technical Field	Assembly/ Subassembly	Machining	Jig and tool production	Sheet metal forming	Heat treatment	Surface treatment	Composite material manufacturing	Painting	Others
									Grinding

Main Businesses

- Grinding of precision parts (prototypes, test pieces, repair parts, hydraulic parts, bearing parts, high-speed rotating shafts of difficult-to-cut materials such as Inconel, pitch hole grinding of CFRP, etc.).

Strength

- We support high-mix and low-volume production, and also, quick estimates and short delivery times. We can meet any request from one piece to mass production. We will actively try to handle difficult-to-cut materials and difficult-to-process materials, so please contact us if you have any problems.
- We have experience in ultra-precision grinding of Inconel, aluminum, stainless steel, titanium, copper, CFRP, etc.. We finish with 5 senses and guarante with high-tech inspection equipment.
- We have certified JISQ9100 and fully equipped with 24-hour constant temperature testing room, 3 dedicated inspectors.

Certifications

JIS Q 9100, KQMS-7200

Facilities

Cylindrical grinder 17units, Internal grinder 15units,
 Surface grinder 10units,
 Jig grinder 4units, Profile grinder 4units,
 Coordinate measuring machine 1unit,
 Roundness measuring machine 2units,
 Shape surface roughness measurement equipment 1 unit



Headquarter



Outer diameter grinding



Examination room



Internal grinding

A d d r e s s	1-9 Sohara Terajimacho, Kakamigahara, Gifu 504-0842, Japan
T e l	+81-58-389-1811
U R L	https://www.ohorikenma.co.jp
Establishment	April 1981
Representative	OHORI Ken, President & CEO
C a p i t a l	JPY 8million
E m p l o y e e s	51
Contact person	OHORI, Business Sect.
T e l	+81-58-389-1811
E - m a i l	ohorikenma@sky.plala.or.jp



company website



Kakamigahara Aero Equipment Co.,Ltd.

15

Technical Field	Assembly/ Subassembly	Machining	Jig and tool production	Sheet metal forming	Heat treatment	Surface treatment	Composite material manufacturing	Painting	Others
			○						Wire Harness processing

Main Businesses

- Processing of high-quality electrical wiring for aircraft, special vehicles, etc.
- Molding of harnesses which can be quickly attached to aircraft and special vehicles.
- Processing of harnesses with excellent electromagnetic interference resistance and environmental resistance.

Strength

- We process a wide variety of products and small quantities.
- We provide high quality and reliable harnesses.
- We complete everything from design to parts procurement and processing in-house.
- We process not only harnesses but also BOX ASSY.

Certifications

JIS Q 9100

Facilities

Laser marking device 3 units

Automatic circuit testing machine 5 units

Low temperature constant temperature and humidity chamber 1 unit



Headquarter



Switchboard wiring assembly



Wire harnesses for special vehicle



Laser marking device

A d d r e s s	3-6, Sohara, Koua-machi, Kakamigahara, Gifu, 504-0814, Japan
T e l	+81-58-382-1152
U R L	http://www.kae-gifu.co.jp
Establishment	April 1968
Representative	HASHIMOTO Masahiro, President & CEO
C a p i t a l	JPY 10million
E m p l o y e e s	140
Contact person	MATSUO, Sales Engineering Section
T e l	+81-58-216-6012
E - m a i l	t.matsuo@kae-gifu.co.jp

company
website





Kato Manufacturing Co.,Ltd. (Kakamigahara)

16

Technical Field	Assembly/ Subassembly	Machining	Jig and tool production	Sheet metal forming	Heat treatment	Surface treatment	Composite material manufacturing	Painting	Others
		○	○						

Main Businesses

- Machining of aerospace equipment parts and design and production of jigs and tools

Strength

- We are a specialized company in the field of aerospace equipment.
- We will introduce the latest equipment such as a 5-axis machining center and aim for ultimate high-mix, low-volume production centered on FMS (Flexible Manufacturing System).
- Our company joined the Aircraft Parts Production Cooperative Association in April 2015, and to shorten delivery times and reduce costs through integrated production, we collaborates with partner companies throughout the entire production process of small and medium-sized parts for commercial, including Boeing aircraft.
We aim to build an efficient and cost-competitive parts supply system.
- Our dream is to form Japan's only aircraft parts manufacturing base and realize collaboration among small and medium-sized companies that can receive a wide range of orders from domestic and overseas aircraft manufacturers.

Certifications

JIS Q 9100

Facilities

- 5 axis machining center 15units
- 4 axis machining center 26units
- 3 axis machining center 17units



Headquarter



Machining center

A d d r e s s	5-82, Kakamihigashimachi, Kakamigahara, Gifu 509-0103, Japan
T e l	+81-58-379-0111
U R L	http://www.katoseisakusho.co.jp
Establishment	April 1965
Representative	KATO Takashi, President & CEO
C a p i t a l	JPY10million
E m p l o y e e s	89
Contact person	TAKASHIMA, Plant Manager
T e l	+81-58-379-0111
E - m a i l	takashima@katoseisakusho.co.jp

company
website





KATO MFG CO.,LTD. (Nakatsugawa)

17

Technical Field	Assembly/ Subassembly	Machining	Jig and tool production	Sheet metal forming	Heat treatment	Surface treatment	Composite material manufacturing	Painting	Others
	○			○					

Main Businesses

- Aircraft-related products, solar power generation systems, ventilation blower parts, automobile products, road noise barrier manufacturing, housing-related products, etc.

Strength

- A long-established company with a 135-year history since its establishment in 1888 (Meiji 21).
- We are expanding our business into the automobile and aircraft industries. Through many years of dealing with finished car manufacturers, we have extensive experience in the automobile industry, which demands high quality, cost, and delivery.
In recent years, we have expanded our business to the aircraft industry and have obtained JISQ9100 certification, the aircraft industry standard. This process is advantageous for aluminum parts in small machines.
- Our deep drawing technology is unrivaled by other companies. Our opposed hydraulic press can easily perform complex shapes and deep drawing, and can also handle high-mix, low-volume production. The surface of the molded product is less likely to be scratched, reducing processing time and mold costs.
- We actively propose VE/VA from the design stage. In some cases, the cost was reduced to 1/5 by switching from cutting to press processing.
- We are a comprehensive processor of pressed sheet metal. Since we perform everything from metal cutting to pressing and welding, we can process products with complex shapes.
- We process various steel materials such as aluminum, stainless steel, and lead.
- Our company utilizes senior human resources and has been featured in numerous media outlets.

Certifications

JIS Q 9100

Facilities

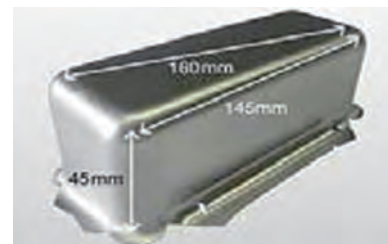
Servo press/Progressive press/General press/Opposed hydraulic press/Hydraulic press
Fiber laser compound machine/Turret punch press NC servo bender Collaborative robot welding machine
Fiber laser welding machine 5-axis machining center CMM5-axis machining center
Opposed hydraulic press 3units



Headquarter



Deep drawing processing using a hydraulic press machine



Part processed by deep drawing

A d d r e s s	447-5, Komanba, Nakatsugawa, Gifu 508-0011, Japan
T e l	+81-573-65-4175
U R L	http://www.katog.co.jp
Establishment	May 1954 (started business in 1888)
Representative	KATO Keiji, President & CEO
C a p i t a l	JPY 56million
E m p l o y e e s	94
Contact person	NISHIO, Sales Dept.
T e l	+81-573-65-4175
E - m a i l	mnishio@katog.co.jp

company website





Kawasaki Gifu Co-operative Society 18

Technical Field	Assembly/ Subassembly	Machining	Jig and tool production	Sheet metal forming	Heat treatment	Surface treatment	Composite material manufacturing	Painting	Others
	○	○	○	○	○	○	○	○	○

Main Businesses

- Kawasaki Gifu Cooperative Society is organized based on the Small and Medium Enterprise Cooperative Association Act, and conducts financial services, education and training, labor management, welfare services, etc. for its members.
- As a major supplier group for Kawasaki Heavy Industries, we are developing a business that contributes to the smooth manufacturing of aircraft-related parts, and also, we are working to win orders from domestic and overseas customers by combining the strengths of the member companies.

Strength

- For more than 50 years since entered the aerospace industry, we have leveraged our organizational strengths to take on new possibilities for the future of the aerospace industry.
- We have established an "integrated production system" in which member company groups carry out a series of manufacturing processes from processing to surface treatment and assembly, and in the future we aim to receive orders by collaborating with other regional clusters.

Certifications

JIS Q 9100 18 companies, ISO 9001 13 companies
 NADCAP 4 companies (surface treatment, composite materials, heat treatment, non-destructive testing)
 ISO 14001 4 companies *Total number of certifications owned by the members

Facilities

5-Axis Machining center 185 units 4-Axis Machining center 114 units 3-Axis Machining center 190 units
 NC lathes 55units CNC lathes 12units Boring machines 21units Electrolytic processing machines 6units
 Autoclaves 4units Heat treatment equipment 3units Surface treatment facility 2units
 3D measuring instruments 46units Laser trackers 17units CATIA 114 units CAD/CAM 82 units
 *Total number of equipments owned by the members



5-Axis Machining center



Surface treatment facility

A d d r e s s	1-17-1, Soharakouamach, Kakamigahara, Gifu 504-0814, Japan
T e l	+81-8-382-2175
E s t a b l i s h m e n t	Dec. 1951
R e p r e s e n t a t i v e	INOUE Ryosuke, Chairman
C a p i t a l	JPY 45.2million
E m p l o y e e s	8
C o n t a c t p e r s o n	MIZUNO, Counsellor
T e l	+81-58-382-2175
E - m a i l	mizuno_n@kawakyo.or.jp

Kawasaki Heavy Industries, Ltd. Aerospace Systems Company 19

Technical Field	Assembly/ Subassembly	Machining	Jig and tool production	Sheet metal forming	Heat treatment	Surface treatment	Composite material manufacturing	Painting	Others
	○	○	○	○	○	○	○	○	

Main Businesses

- In the aerospace business, we conduct research and development, manufacturing, and MRO for large and small fixed-wing aircraft, helicopters, guidance equipment, and space-related equipment.
In the engine business, we conduct manufacture and repair helicopter engines and manufacture engine parts for passenger aircraft.

Strength

- Our main business fields are "land, sea, and air transportation systems," "energy environment," and "industrial equipment."
With advanced comprehensive technological capabilities in a wide range of fields, we contribute to the development of society by providing products and services which meet the diverse needs of people of the world while being in harmony with the global environment.

Certifications

JIS Q 9100, JIS Q 9001 (ISO9001), JIS Q 14001 (ISO 14001)



Helicopter H145//BK117 D-3

A d d r e s s	【Tokyo】 1-14-5 kaigan, Minato-Ku, Tokyo 105-8315, Japan 【Kobe】 Kobe Crystal Tower 1-3, Higashikawasaki-cho, 1-chome, Chuo-ku Kobe, 650-8680, Japan 【Gifu Works】 1, Kawasaki-cho, Kakamigahara, Gifu 504-8710, Japan
T e l	+81-58-382-5712 (Gifu Works)
U R L	https://www.khi.co.jp
E s t a b l i s h m e n t	Oct. 1896
R e p r e s e n t a t i v e	HASHIMOTO Yasuhiko, President & CEO
C a p i t a l	JPY104,484million
E m p l o y e e s	38,254 (consolidated)
C o n t a c t p e r s o n	IMAMURA, General Affairs Section
T e l	+81-58-382-5712 (main)
E - m a i l	imamura_masanori@global.kawasaki.com

company
website





Kawaju Gifu Engineering co., Ltd.

20

Technical Field	Assembly/ Subassembly	Machining	Jig and tool production	Sheet metal forming	Heat treatment	Surface treatment	Composite material manufacturing	Painting	Others
									○

Others: Aircraft R&D, design, testing, ME, IT etc

Main Businesses

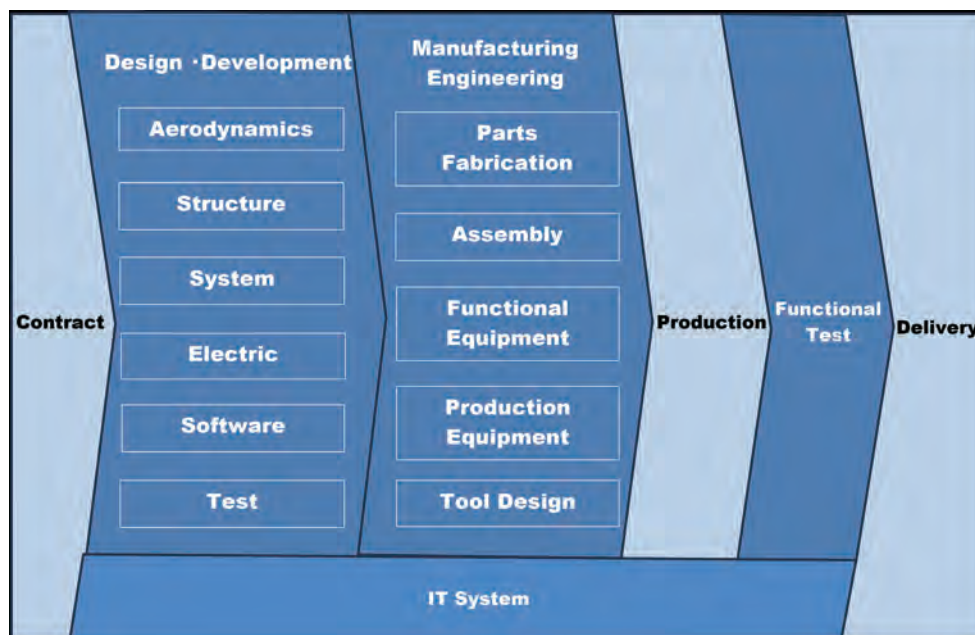
- Business related to research and development, design, testing, manufacturing engineering, IT, etc. of aerospace-related equipment

Strength

- We are supporting design field, manufacturing engineering field and information technology field, etc. for the aircraft produced by Kawasaki Heavy Industries Aerospace segment.
- We apply aerospace technology to create many unique and superior products and equipment, and utilize our advanced expertise to provide a variety of technical services.

Certifications

JIS Q 9100



We support **technology related field** of KHI Aerospace segment.

Address	2, Kawasaki-cho, Kakamigahara, Gifu 504-0971, Japan
Te l	+81-58-389-4633
U R L	https://www.khi.co.jp/corp/kge/
Establishment	July 1981
Representative	NAGAYAMA Keiichi, President
Capital	JPY 70million
Employees	562
Contact person	YAMAMOTO, Marketing and Business Planning Dept.
Te l	+81-58-389-4633
E - m a i l	yamamoto_masato@global.kawasaki.com



Technical Field	Assembly/ Subassembly	Machining	Jig and tool production	Sheet metal forming	Heat treatment	Surface treatment	Composite material manufacturing	Painting	Others
		○	○	○	○				○

Others: Superplastic forming, Water jet cutting, Metal additive manufacturing

Main Businesses

- Heat treatment of metal parts, hot forming, water jet cutting, machining
- Sintering, joining, and internal defect removal of metals and ceramics (HIP processing)
- Metal additive manufacturing (3D printer)
- Examination, analysis, inspection

Strength

- We can provide parts manufacturing technology based on heat treatment, processing, and design to all fields.

Certifications

JIS Q 9100 , JIS Q 9001(ISO 9001), Nadcap (Heat Treatment)

Facilities

Toki factory, one of our 6 bases nationwide, is equipped with large vacuum furnaces ($\phi 2100 \times H2700$) 4units, atmospheric furnaces (W1200 x L2500 x H700) 2units, hot forming, HIP equipment and water jet processing machines for processing various metal materials.

Other facilities equipped in the factories other than Toki factory are also available, so please feel free to contact us.



Toki factory



Vertical single-chamber vacuum furnace
($\phi 2100 \times H2700$)

A d d r e s s	【Head Quarter】 Harmony Tower 27th floor, 1-32-2 Honmachi, Nakano-ku, Tokyo 164-8721, Japan 【Toki Plant】 Toki Aqua Silva, 1431-56 Kitayama, Kujiri, Izumi-cho, Toki, Gifu 509-5142, Japan
T e l	+81-3-5365-3050
U R L	https://www.kinzoku.co.jp
Establishment	Feb. 1960
Representative	HATANAKA Hideo, President & CEO
C a p i t a l	JPY288million
E m p l o y e e s	482
Contact person	ISEKI, Sales section
T e l	+81-572-53-2356
E - m a i l	miseki@kinzoku.co.jp

company website



Technical Field	Assembly/ Subassembly	Machining	Jig and tool production	Sheet metal forming	Heat treatment	Surface treatment	Composite material manufacturing	Painting	Others
		○							

Main Businesses

- Steel parts processing (Processing parts for aerospace, automobile, medical, and semiconductor industries)

Strength

- We are capable of cutting a wide variety of products and responding to emergency parts.
- We take on further challenges by leveraging the technological capabilities we have cultivated since 1968.

Certifications

JIS Q 9100, ISO 9001

Facilities

- Multi-tasking machine MAZAK QTN100-2MY 2 units
- Multi-tasking machine MAZAK INTEGREX i-100S 1 unit
- CNC automatic lathe CITIZEN A-32, L-20, L-12 1 unit each
- 5-axis machining center Matsuura Machine MX-520 1 unit
- 3D measuring machine Mitutoyo FALCIO-Apex9106 1 unit



Headquarter



Aerospace parts

A d d r e s s	1530-1 Ariho, Hachiman-cho, Gujo, Gifu 501-4201, Japan
T e l	+81-575-62-2230
U R L	http://onepure360.com/gujorashi.html
Establishment	1987 (Business started in 1968)
Representative	TAKASE Yasufumi, President & CEO
C a p i t a l	JPY 10million
E m p l o y e e s	25
Contact person	TAKASE, General Affairs Sect.
T e l	+81-575-62-2230
E - m a i l	yoshiko_t @ gujorashi.com





Technical Field	Assembly/ Subassembly	Machining	Jig and tool production	Sheet metal forming	Heat treatment	Surface treatment	Composite material manufacturing	Painting	Others
		○							

Main Businesses

- Aircraft precision parts manufacturing
- Mass production of turbine blades installed in aircraft engines
- Rocket engine parts processing
- Prototype development of rocket parts

Strength

- Manufacture of precision parts from fingertips to palm-sized parts.
- Handling wide variety of materials, difficult-to-cut materials, and small-lot processing are available.
- Response to emergency parts.
- Take on any project by utilizing the technical capabilities we have cultivated since 1958.

Certifications

ISO 9001, JIS Q 9100, MSJ 4000

Facilities

5-axis processing machine 1 unit Electrical discharge machine 1 unit Wire processing machine 1 unit
 Internal and external diameter grinding machines 4 units Multifunction devices 2units
 3D measuring machine 1 unit Blade grinders 2units



Mitake Plant



5-axis processing machine

A d d r e s s	【Head Quarter】 4-26 Kanamecho, Minami-ku, Nagoya, Aichi 457-0802, Japan 【Mitake Plant】 2188-62 Mitake Minamiyama, Mitake-cho, Kani-gun, Gifu 505-0116, Japan
T e l	+81-52-611-5456
U R L	http://www.kosakaiw.com/
E s t a b l i s h m e n t	May 1958
R e p r e s e n t a t i v e	KOSAKA Daisuke, President & CEO
C a p i t a l	JPY20million
E m p l o y e e s	90
C o n t a c t p e r s o n	INOUE, Sales Section
T e l	+81-52-611-5456
E - m a i l	tomoaki_inoue@kosakaiw.com

company website



Kondo Giken Co., Ltd.

24

Technical Field	Assembly/ Subassembly	Machining	Jig and tool production	Sheet metal forming	Heat treatment	Surface treatment	Composite material manufacturing	Painting	Others
		○							

Main Businesses

- Precision machining of automobile parts, special equipment parts, machine tool parts, medical parts, control equipment parts, and aircraft parts.

Strength

● Features

We design and manufacture the jigs necessary for processing in-house.

We research tool forming and regrinding in-house which contribute to improving production efficiency.

In order to establish an integrated production system, we have established an in-house inspection system using a coordinate measuring machine.

● Achievement of processing

Aluminum (A2017, A2024, A5052, A7075)

Titanium (Ti-6AL-4V)

Stainless steel (SUS303, SUS304, SUS316, SUS430, SUS630, 15-5PH)

Heat-resistant steel (713C, SCH21, HK30)

Certifications

ISO 9001, JIS Q 9100

Facilities

5-axis machining center (Makino milling a61nx-5E, Mazak VARIAXIS630-5XII)

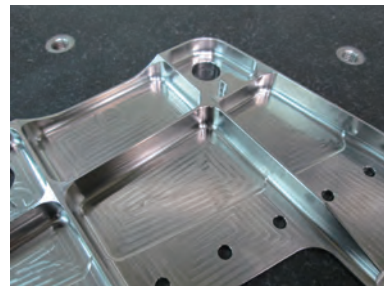
Coordinate measuring machine (Tokyo Seimitsu CONTURA G2)

3D CAD/CAM (introduced software MastercamX7, interference software G-Navi)

Others (horizontal machining centers, complex CNC lathes, etc. approximately 200 units)



Headquarter



Aluminam part processed by 5-axis machining center

A d d r e s s	335-1 Gomachi, Kaizu-cho, Kaizu, Gifu 503-0645, Japan
T e l	+81-584-53-0936
U R L	http://kondougiken.com
Establishment	May 1980
Representative	KONDO Hironori, President and CEO
C a p i t a l	JPY24million
E m p l o y e e s	72
Contact person	KONDO, General Affairs Dept.
T e l	+81-584-53-0936
E - m a i l	info@kondougiken.co.jp

company
website



Sunwa Trading Corporation

Technical Field	Assembly/ Subassembly	Machining	Jig and tool production	Sheet metal forming	Heat treatment	Surface treatment	Composite material manufacturing	Painting	Others
							○		Trading company

Main Businesses

- Import and sales of aerospace parts, tools, materials, chemical products, and equipments
- Import, sales, and molding of composite materials and equipments for automobiles, vehicles, and general industries.

Strength

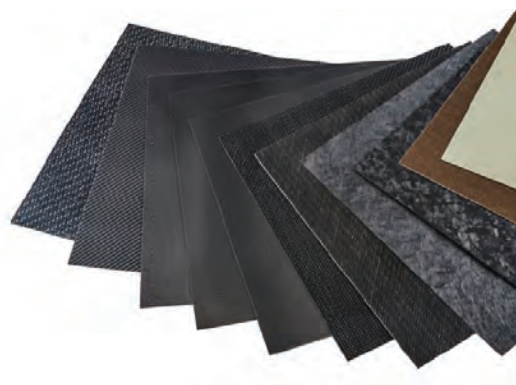
- Since the founding in 1976, we have steadily expanded our business of importing and selling aircraft-related materials to Japan's aerospace manufacturing industry and airline companies.
- In recent years, as a leading company in CFRTP, we have been providing technical proposals for composite materials and lightweight materials not only for aircrafts, but also for automobiles and general industries.

Certifications

JISQ9100, ISO9001



Headquarter building



Continuous fiber thermoplastic composite material

A d d r e s s	3-204 Unuma Kawasakicho, Kakamigahara, Gifu 509-0147, Japan
T e l	+81-58-389-4511
U R L	http://www.sunwa-trading.co.jp
E s t a b l i s h m e n t	Jan. 1976
R e p r e s e n t a t i v e	BABA Shunichi, President & CEO
C a p i t a l	JPY10 million
E m p l o y e e s	20
C o n t a c t p e r s o n	BABA, Sales Dept.
T e l	+81-58-389-4511
E - m a i l	stc003@sunwa-trading.co.jp

company website



Technical Field	Assembly/ Subassembly	Machining	Jig and tool production	Sheet metal forming	Heat treatment	Surface treatment	Composite material manufacturing	Painting	Others
		○	○						

Main Businesses

- Machining of aerospace parts
- Machining of automobile parts
- Design, development, manufacture, and sales of medical equipment and welfare-related equipment
- Design, development, manufacturing, and sales of small hydroelectric power generation equipment

Strength

- We respond quickly to high-mix, small-lot parts.
- We design and manufacture special machines for processing mass-produced parts.
- We process complex shapes using a five-axis multi-tasking machine and CAD/CAM.
- We process low alloy steel, ultra-high strength steel (300M, 4340, etc.), corrosion-and-heat-resistant steel (A286, 15-5PH, 17-4PH, PH13-8Mo, etc.), super heat-resistant steel (Inconel718, Waspaloy, Nimonic, etc.), titanium alloys (Ti-6AL-4V, etc.), aluminum alloys (2024, 6061, 7075, etc.) and difficult-to-cut materials (Inconel, Hastelloy, Titanium, Invar, Coval, etc.).

Certifications

Type 2 medical device manufacturing and sales business license (21B2X10010)
 Medical device manufacturing license (21BZ200047)

Facilities

Automatic lathe SR-10J 1 unit SB-20R 4 units SR-32JII 1 unit
 NC machining center NEXUS 510C 1 unit
 Five-axis compound machining center VARIAXIS 630 5X2T 1 unit
 Five-axis compound lathe INTEGREX J-200 1 unit
 Five-axis compound lathe INTEGREX100-IV 1 unit
 Five-axis compound lathe INTEGREX100-IISY 1 unit
 NC lathe NEXUS-100 (1 unit), NEXUS-200 1 unit
 3D CAD/CAM (SolidWorks, hyperMILL)
 Surface texture measuring machine (SV-C3200)
 Image dimension measuring device (IM-6225)
 Coordinate measuring machine (BH-V710)
 Projector (PJ-H30)
etc.



Headquarter

A d d r e s s	1074-15 Kusumi, Osashimacho, Ena 509-7206, Japan
T e l	+81-573-25-2788
U R L	https://suminoseisakusho.jp
Establishment	Mar. 1989 (Business started in 1918)
Representative	SUMINO Hideya, President & CEO
C a p i t a l	JPY 5million
E m p l o y e e s	14
Contact person	SUMINO, Sales Dept.
T e l	+81-573-25-2788
E - m a i l	m_sumino@suminoseisakusho.jp

company
website



Technical Field	Assembly/ Subassembly	Machining	Jig and tool production	Sheet metal forming	Heat treatment	Surface treatment	Composite material manufacturing	Painting	Others
	○	○		○					piping parts

Main Businesses

- Piping parts that involve bending and terminal processing of aluminum, titanium, and stainless steel pipes for aviation and space equipment
- We support from low-pressure piping to hydraulic high-pressure piping for fuel, preheating, exhaust, and fire extinguishing systems

Strength

- Unique technical capabilities backed by many years of TUBE processing experience, dimension and shape assurance using a coordinate measuring machine, quality assurance using various calibration devices and jigs, quality assurance system based on JIS Q 9100
- <Future concept (draft) >
 - Parts production using 5-axis machining center
 - Starting welded piping assembly
 - Integrated production to surface treatment and painting of finished products

Certifications

JIS Q 9100, ISO 9001

Facilities

NC pipe bender (1/4" to 1.5" size compatible, 2 hydraulic right benders, 1 electric left bender)
 2 coordinate measuring machines (NC vendor online method)
 Pressure test equipment (1 unit for high pressure 300PSI to 15000PSI, 1 unit for low pressure 0PSI to 700PSI)
 3 terminal processing machines (single/double flare, bead, dynas swage)



Pipe bender processed products



Bending equipments



Coordinate measuring machines

A d d r e s s	7-1-12 Uetocho, Kakamigahara, Gifu 504-0927, Japan
T e l	+81-58-322-5551
U R L	https://www.seiwa-i.com
Establishment	July 1984
Representative	TSUCHIYA Yoshihiro, President & CEO
C a p i t a l	JPY10million
E m p l o y e e s	111
Contact person	YAMADA, Manufacturing Engineering Sect.
T e l	+81-58-322-5551
E - m a i l	a.yamada@seiwa-i.com

company
website



Chubu Heat treatment CO., LTD.

28

Technical Field	Assembly/ Subassembly	Machining	Jig and tool production	Sheet metal forming	Heat treatment	Surface treatment	Composite material manufacturing	Painting	Others
					○				

Main Businesses

- Metal heat treatment processing: General tempering, bright hardening, carburizing hardening, shot blasting, distortion correction (possible from round items to press tempering)

Strength

- We process large parts (800mm x 1500mm) and black dyeing and bonding treatment are processed at our partner companies.

Certifications

JIS Q 9100, ISO 9001

Facilities

Batch furnaces 7 units,
Continuous furnaces 4 units,
Shot machines 10 units,
Vertical pit furnaces (compatible with large size 800mm x 1500mm) 2 units,
Annealing furnace 1unit



Inspection process



Heat treatment process (quenching)

A d d r e s s	2694 Higashinobora, tounobora, Seki, Gifu 501-3206, Japan
T e l	+81-575-23-0141
U R L	https://netsu123.com
E s t a b l i s h m e n t	May 1981
R e p r e s e n t a t i v e	KATAOKA Noriyoshi, President & CEO
C a p i t a l	JPY30million
E m p l o y e e s	65
C o n t a c t p e r s o n	KATAOKA, Sales and General affairs Sect.
T e l	+81-575-23-0141
E - m a i l	info@netsu123.com

company
website



Technical Field	Assembly/ Subassembly	Machining	Jig and tool production	Sheet metal forming	Heat treatment	Surface treatment	Composite material manufacturing	Painting	Others
				○			○		

Main Businesses

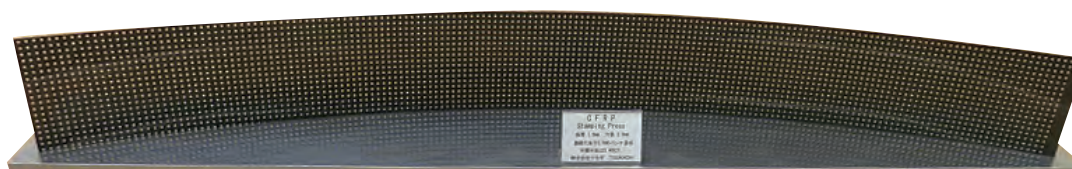
- Metal press product manufacturing
- Press mold design and manufacturing
- Spatula drawing process

Strength

- We are applying the technology we have cultivated in metal press processing to punching CFRP and GFRP, and are currently working on various composite materials.
- We, mainly young employee work hard every day to meet the quality demands of our customers, while sharing our knowledge.
- To any material, "we first try to see if we can punch through".
- We have started a new spatula drawing process in November 2023. We will work on various technologies.

Facilities

200ton servo press 150ton progressive press 150ton transfer press
 Potter's wheel for spatula drawing processing NC spatula drawing processing machine (spinning machine)
 Coordinate measuring machine Image dimension measuring machine



Drilled products (CFRP press)



Spatula drawing processing sample (aluminum)



200ton digital electric servo press

A d d r e s s	554-1 Oze, Seki, Gifu 501-3265, Japan
T e l	+81-575-23-2376
U R L	http://www.t-k-d.co.jp
Establishment	June 1989 (Business started in 1970)
Representative	TSUKADA Hiroki, President and CEO
C a p i t a l	JPY10million
E m p l o y e e s	17
Contact person	TSUKADA, Sales Sect.
T e l	+81-575-23-2376
E - m a i l	info@t-k-d.co.jp

company
website



TOKUDA TOKUDA INDUSTRY CO., LTD. 30

Technical Field	Assembly/ Subassembly	Machining	Jig and tool production	Sheet metal forming	Heat treatment	Surface treatment	Composite material manufacturing	Painting	Others
	○	○	○						

Main Businesses

- Aircraft parts manufacturing
- Jigs for parts manufacturing and inspection
- Wind tunnel test model, mock-up of aircraft
- Prototype, model manufacturing

Strength

- We own a large number of metal processing machines and produce machined parts for aircraft such as aluminum, duralumin, and CFRP in a variety of sizes and types in small lots. We also produce full-scale models such as helicopters and Zero fighters, as well as models for wind tunnel testing, and are also good at large-scale products.
- In the automobile-related business, we carry out integrated production from design to processing and finishing of molds, inspection tools, crimping jigs, etc.

Certifications

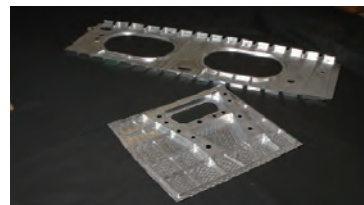
JIS Q 9100

Facilities

5-axis machining center 25 units *Maximum stroke 17m 4 axis machining center 4 units
 3-axis machining center 5 units 3D measuring machine 3units
 Laser tracker 1unit CATIA V5 6 units 3D printer 2 units



5-axis large machined parts (aluminum)



3-axis large machined parts (aluminum)



Real size mockup



Real size display model

A d d r e s s	209 Kinzokudanchi, Kakamigahara, Gifu 504-0957, Japan
T e l	+81-58-380-0003
U R L	http://www.tokuda.co.jp/
Establishment	June 1948
Representative	TOKUDA Yasuaki, President & CEO
C a p i t a l	JPY30million
E m p l o y e e s	120
Contact person	SAWAI, Sales Dept.
T e l	+81-58-380-0003
E - m a i l	sawai@tokuda.co.jp

company
website



TOBAKOSAN CO., LTD.

Technical Field	Assembly/ Subassembly	Machining	Jig and tool production	Sheet metal forming	Heat treatment	Surface treatment	Composite material manufacturing	Painting	Others
		○	○	○	○				

Main Businesses

- Design, development, and manufacture of press molds
- Manufacture of aluminum and titanium sheet metal parts for aircraft fuselages and engines

Strength

- Manufacturing a wide variety of sheet metal parts using in-house designed tools
We have experience in manufacturing many sheet metal parts, including hydraulic forming, brake forming, punch press, etc. By designing and developing molds using molding data accumulated through many years of experience, we are able to efficiently produce high-quality parts at low cost.
- Nadcap special process certification (heat treatment, laser processing)
We have obtained Nadcap certification for the heat treatment process and can process aluminum materials 2024-T42, T62, 6061-T42, T62, 6013-T6, 7075-W, T62, and T73. We can also perform metal tests, hardness tests, and tensile tests in-house to calibrate heat treatment furnaces.
In addition, our 5-axis laser processing machine has also obtained Nadcap certification, and we process PW4000 engine parts made of HASTELLOY material using a certified processing machine.

Certifications

ISO 9100 (JIS Q 9100), ISO 14001, Nadcap (Heat Treating, Nonconventional Machining)

Facilities

NC router/NC machine tool/3D measuring instrument (FARO)
water jet processing machine (abrasive),
5-axis laser processing machine (Nadcap certified), brake press/bending roller (2600mm/t=6.0) / Mechanical press / Hydraulic press
Hydroforming machine 1600X600XH80(Quintus),2000X1000XH120 800bar(Quintus)
Heat treatment solution furnace / Heat treatment artificial aging furnace (Nadcap certified)



Nanbu Factory



Hydroforming machine(Quintus)
2000X1000XH120



Heat treatment solution furnace
800X1800X800



Hardness measuring instrument



Tensile testing machine

A d d r e s s	9-260 Kagami Ogase-cho, Kakamigahara, Gifu 509-0104, Japan
T e l	+81-58-384-1225
U R L	https://www.tobakoken.co.jp
Establishment	Sept. 1958
Representative	SOBAJIMA Masao, President & CEO
C a p i t a l	JPY 90million
E m p l o y e e s	334
Contact person	MAKINO, Sales Dept.
T e l	+81-574-62-3220
E - m a i l	m-makino@tobakoken.co.jp

company website





Collage of Naka-Nippon Aviation

Technical Field	Assembly/ Subassembly	Machining	Jig and tool production	Sheet metal forming	Heat treatment	Surface treatment	Composite material manufacturing	Painting	Others
									Aviation human resources education

Main Businesses

- Our school trains engineers who are active in various fields of the aerospace industry.
- There are three departments: Aviation Maintenance Department, Aviation Robotics Department (reorganized in April 2023), and Airport Service Department.
In addition to airlines, there are also many job openings in major heavy industry companies and in the electrical, electronic, mechatronics, and mechanical fields.
- About 14,000 graduates (as of March 31, 2024). Currently they are active in aerospace-related companies nationwide.

Strength

- Our school is one of Japan's largest specialized aviation schools, with an educational philosophy of "Being a good human being before being an engineer," and emphasizing humanity and practical education. We provide education in well-equipped environment, we develop aviation workers who can grow even after entering society and have the ability to carve out a path to the future through exciting and thrilling learning.



Aviation Maintenance Dept.

[Aviation Maintenance Department]

- Airman training facility designated by the Minister of Land, Infrastructure, Transport and Tourism
⇒ Largest in Japan in terms of types of qualifications that can be obtained and number of trainers
- The only training facility in Japan for the second-class aircraft mechanics (turbine airplanes)
- One of 3 schools having established airline (ANA/JAL) mechanic training courses
- The only training second class aviation mechanics for turbine helicopters in western Japan



Aviation Robotics Dept.

[Aviation Robotics Department]

- The only college in Japan which country can learn "aviation" and "robots"
- Curriculum structure which is learned from scratch regardless of for the first time various majors in high school
- Graduates are employed not only in avionics but also in the drone and robot fields that meet the needs of society
- B737, B777 flight simulators, industrial robots, dual-arm robots duAro, pepper, drones, and other fully equipped facilities allow our students to learn



Airport Service Dept.
Ground Handling Course

[Airport Service Department]

<Ground handling course>

- Practical training using Japan's leading special vehicles at a vast dedicated training field on campus
- Graduates can play an active role in international cargo loading operations based on curriculum such as international air cargo regulations
- Pushback training for large aircraft using VR for the first time in colleges in Japan.

<Cabin Attendant/Ground Staff Course>

- Master of hospitality skills such as check-in and baggage storage through internship trainings with ground staff at airports
- Conduct high-quality practical classes using in-flight mockups and counter mockups like to the real thing
- Plan further improvement of English skills, give cabin attendants and international ground staff proficiency in English



Airport Service Dept.
Cabin Attendant/Ground Staff Course

A d d r e s s	1577 Hasama, Seki, Gifu 501-3924, Japan
T e l	+81-120-252-159
U R L	https://www.cna.ac.jp
E s t a b l i s h m e n t	1970
R e p r e s e n t a t i v e	NAKAMURA Hisashi, Principal
E m p l o y e e s	56
C o n t a c t p e r s o n	KAMITAMARI, Publicity Sect.
T e l	+81-120-252-159
E - m a i l	kouhou@cna.ac.jp

company website



NAGOJI IRON WORKS Ltd.

33

Technical Field	Assembly/ Subassembly	Machining	Jig and tool production	Sheet metal forming	Heat treatment	Surface treatment	Composite material manufacturing	Painting	Others
		○	○						

Main Businesses

- Machine processing of aircraft parts and jigs for aircraft parts.

Strength

- The machining center and NC milling cutter are inductance type on all axes, improving pitch machining accuracy. For mass-produced and repeated parts, we believe that our strength is that we can meet demands for quality and delivery with using special tools and jigs developed and manufactured in-house.

Facilities

Machining center

MAKINO V99(1500 X 1000 X 650)

MAKINO V61nx (730 X 650 X 800) 1unit

OKUMA 800H (1250 X 1000 X 8500) 1unit



Headquarter



Aircraft parts(aluminum)

A d d r e s s	1887-1 Takanosu, Kamono-cho, Minokamo, Gifu 505-0051, Japan
T e l	+81-574-25-8007
U R L	https://nagoji.jp
Establishment	Aug. 1990
Representative	NAGOJI Takahiro, President & CEO
C a p i t a l	JPY3million
E m p l o y e e s	7
Contact person	NAGOJI, President & CEO
T e l	+81-574-25-8007
E - m a i l	nagojio-tk@bz01.plala.or.jp

company
website



ナブテスコ株式会社 Nabtesco Corporation

34

Technical Field	Assembly/ Subassembly	Machining	Jig and tool production	Sheet metal forming	Heat treatment	Surface treatment	Composite material manufacturing	Painting	Others
	○	○	○*		○	○		○	

*designing only

Main Businesses

- Nabtesco Corporation was established in 2003 through the merger of "Nabco Corporation", which has fluid and pneumatic control technology, and "Teijin Seiki Co., Ltd.", which has cutting and assembly processing technology. We are expanding our technological base and business, and are developing business in a wide range of fields centered on motion control technology that precisely controls ""moving and stopping.""
- ◆ Precision reduction gear ◆ Aviation equipment ◆ Hydraulic equipment ◆ Marine equipment
- ◆ Railway vehicle equipment ◆ Automatic doors, etc

Strength

- Nabtesco Corporation Aerospace Company leverages its rich experience both domestically and internationally, the hydraulic technology it has cultivated, and its high-quality production technology, develop, manufacture and sell products that support safety, security, and a comfortable ride during air travel.
- The Aerospace Company's main product, the flight control actuation system, boasts approximately 100% share of domestically produced aircraft.

Certifications

JIS Q 9100, JIS Q 9001 (ISO 9001), ISO 14001, ISO 45001

Facilities

5-axis machining center, 4-axis machining center, Lathe, Grinding machine, Jig borer,
Ultra-high precision grinding machine,
High-precision hydraulic test stand
(aircraft hydraulic oil, fuel system hydraulic oil),
Heat treatment furnace,
Various surface treatment equipment, etc.



Gifu Plant

A d d r e s s	【Head Quarter】 JA Kyosai Building, 2-7-9 Hirakawacho, Chiyoda-ku, Tokyo 102-0093, Japan 【Gifu Plant】 1110-1 Miyashiro, Tarui-cho, Fuwa-gun, Gifu 503-2192, Japan
T e l	+81-3-5213-1133
U R L	https://www.nabtesco.com
E s t a b l i s h m e n t	Sept. 2003
R e p r e s e n t a t i v e	KIMURA Kazumasa, President & CEO
C a p i t a l	JPY10,000million
E m p l o y e e s	Consolidated 7,928(as of Dec 2022)
T e l	+81-584-22-3121 (Gifu Plant)

company
website

Technical Field	Assembly/ Subassembly	Machining	Jig and tool production	Sheet metal forming	Heat treatment	Surface treatment	Composite material manufacturing	Painting	Others
	○	○	○						Measurement

Main Businesses

- Production of various jigs and tools mainly for aircraft
- Machine processing of aircraft parts
- SUB assembly of aircraft parts
- Measurement work using a portable coordinate measuring machine.

Strength

- Measurement trips from Japan to overseas are also possible.
Our company has advanced measurement technology using portable coordinate measuring machine.

Certifications

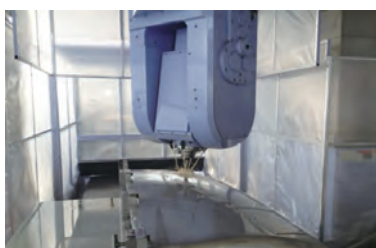
JIS Q 9100

Facilities

Several large NC machines
Several laser trackers and arms



Measuring process



Gate-type 5-axis machining center



Mobile laser tracker

A d d r e s s	7-1-24 Uetocho, Kakamigahara, Gifu 504-0927 Japan
T e l	+81-58-383-6351
U R L	http://www.nabeYA-mfg.co.jp/
Establishment	Nov. 1971
Representative	OKAMOTO Tomohiko, President & CEO
C a p i t a l	JPY40million
E m p l o y e e s	95
Contact person	TAMURA, General Affaris Sect.
T e l	+81-58-383-6351
E - m a i l	ytamura@nabeYA-mfg.co.jp

company
website





NICHIDEN SEIMITSU KOGYO CO.,LTD. 36

Technical Field	Assembly/ Subassembly	Machining	Jig and tool production	Sheet metal forming	Heat treatment	Surface treatment	Composite material manufacturing	Painting	Others
	○	○	○	○		○			○

Others: electrical discharge machining, laser processing

Main Businesses

- Metal parts processing
- Electric discharge machining of aviation/defense related parts, production of main parts of automobile engines, production of medical scalpels, production of semiconductor memory and LED lead frames
- Design and manufacture of precision molds, manufacture of precision press parts
- Design and manufacture of externally sold semiconductor manufacturing equipment, design and manufacturing of in-house automation equipment, and image inspection equipment

Strength

- We are participating in GACCT(Gifu Aerospace Component ClusTer) and ASAKIN Virtual Cluster, and can handle processes outside of our areas of expertise between clusters.
- We do business with a variety of fields such as aerospace and defense, automobiles, medical care, architecture, semiconductors, and home appliances, and can respond to any QCDS needs. In particular, we have obtained three QMS certifications: JIS Q 9100, IATF16949, and ISO9001, and we provide quality assurance using a QMS that is appropriate for the product.

Certifications

JISQ9100, IATF16949, ISO9001, ISO14001

Facilities

Cutting machines (machining centers) 8units
 Electrical discharge machines 27units
 Grinding machines 59units
 Laser processing machine 1 unit
 Coordinate measuring machines 12units
 Laser microscope 1 unit

Gifu Aerospace Component ClusTer.



GACCT (Gifu Aerospace Component ClusTer)
 ※NICHIDEN SEIMITSU KOGYO is a member of GACCT

A d d r e s s	336-1 Mitsukacho, Ogaki, Gifu 503-8557, Japan
T e l	+81-58-481-6321
U R L	http://www.nsk-cp.co.jp
Establishment	Oct. 1949
Representative	YOSHIDA Keiji, President and CEO
C a p i t a l	JPY88.8million
E m p l o y e e s	358 (consolidated)
Contact person	YOSHIDA, Sales Sect.
T e l	+81-58-481-6321
E - m a i l	masashi_yoshida@nsk-cp.co.jp

company
website



NP Nippon Press Industries Co., LTD

Technical Field	Assembly/ Subassembly	Machining	Jig and tool production	Sheet metal forming	Heat treatment	Surface treatment	Composite material manufacturing	Painting	Others
	○	○						○	

Main Businesses

- Assembling aircraft parts
- Assembling of automobile/bus parts (integrated production)
- Assembling of industrial machinery (construction machinery, machine tool parts) (integrated production)
- Integrated production of welfare equipment and medical parts

Strength

- We celebrated our 70th anniversary in 2017, and from our location in Sakahogi, Gifu, we are helping customers around the world through manufacturing
- We are manufacturing experts that utilizes our unique production management technology (robot automation, jig design/manufacturing technology, mold manufacturing technology) to provide solutions not only for processing mass-produced parts, but also for processing high quality non-mass-produced parts
- I believe it is rare for a single company to assemble mass-produced automobile parts and aircraft parts

Certifications

JIS Q 9100

Facilities

400t press 4units (1unit for sequential processing)
 200t servo press 1 unit/35t~350t press 24 units
 CO₂ welding machines 18units (low spatter compatible)
 Welding robots 37units (10 servo spot/7 handling)
 NC pipe benders 2units
 Laser processing machines 2units
 Shot blast 1 unit
 3 aluminum extrusion material (sash) processing machines



Aircraft part assembly



Aircraft part fabrication



Headquarter



Aircraft part assembly



Welding process

A d d r e s s	2145-5 Sakakura, Sakahogi-cho, Kamo-gun, Gifu 505-0074, Japan
T e l	+81-574-26-0171
E s t a b l i s h m e n t	June 1947
R e p r e s e n t a t i v e	YOSHIDA Ryuhei, President &CEO
C a p i t a l	JPY 50million
E m p l o y e e s	79
C o n t a c t p e r s o n	Yamaguchi, Aircraft Dept., No.2 Factory
T e l	+81-574-25-3856
E - m a i l	npdai2@np-press.co.jp



HAYAKAWA INDUSTRIES CO., LTD.

Technical Field	Assembly/ Subassembly	Machining	Jig and tool production	Sheet metal forming	Heat treatment	Surface treatment	Composite material manufacturing	Painting	Others
	○	○		○					

Main Businesses

- Aircraft parts manufacturing
- Railway vehicle parts manufacturing
- Manufacture of industrial equipment (heat exchangers)

Strength

- Since our founding, we have been manufacturing parts and assemblies for railway vehicles, aircraft, heat exchangers and other products by utilizing our special technologies in welding, sheet metal and cutting of steel, aluminum and stainless steel to respond diversifying needs
- Currently, in addition to manufacturing parts that utilize sheet metal technology from the aircraft industry, we also manufacture large cutting processed parts.

Certifications

JIS Q 9100

Facilities

Sheet metal bending equipment:

Brake press 400 tons 6m 1 unit, NC 3 rollers 1unit

Machining equipment:

5-axis portal machining center 3mX8m, 3mX6m

3-axis portal machining center 1.5mX5m, 1.2mX4m (2APC)

4-axis horizontal machining center

3-axis vertical machining center

Inspection equipment:

Coordinate measuring machine



Gate type 5 axis MC



Coordinate measuring machine

A d d r e s s	2-446 Suecho, Kakamigahara, Gifu 509-0108, Japan
T e l	+81-58-384-1148
U R L	http://www.hayakawa.biz-web.jp
Establishment	Oct. 1956
Representative	HAYAKAWA Futoshi, President & CEO
C a p i t a l	JPY 98million
E m p l o y e e s	90
Contact person	NIWA, Aircraft Div.
T e l	+81-58-384-1148 / +81-58-384-1145 (direct)
E - m a i l	hkk.7122@siren.ocn.ne.jp

company website



ハヤシテイル HAYASHITERU INDUSTRY

39

Technical Field	Assembly/ Subassembly	Machining	Jig and tool production	Sheet metal forming	Heat treatment	Surface treatment	Composite material manufacturing	Painting	Others
	○	○	○	○				○	Precision Welding

Main Businesses

- Welding, machining, sheet metal processing, and assembling for aircraft-related parts
- Welding, machining, sheet metal processing and assembling for metal parts for the defense industry
- Development of support equipment products for medical and welfare sites

Strength

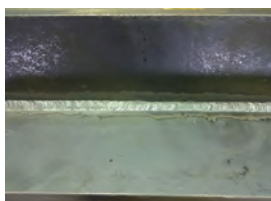
- We specialize in precision welding and precision metal processing of iron, aluminum, stainless steel, etc.
- We provide the highest quality welding through our skilled techniques and thorough commitment to quality.
- With our outstanding development capabilities and precision processing technology, we create beautiful, high-precision products.
- We have certified JIS Q 9100 (aerospace and defense quality control standard)
- We provide high-quality manufacturing that meets customer needs. We are striving to evolve the system through continuous improvements.
- We have an in-house integrated production system (design→material procurement→processing→inspection→assembly→delivery), so we can respond quickly.

Certifications

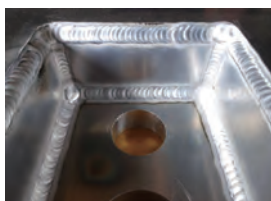
JIS Q 9100

Facilities

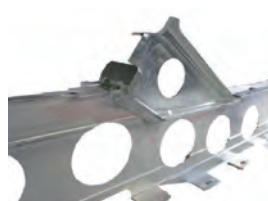
Gate-type 5-axis machining center/Yamazaki Mazak Co., Ltd. VORTEX 1400/160-1IX [4200×Y1400×Z610] Simultaneous 5-axis control/1 unit
 Vertical 3-axis machining center/Yamazaki Mazak Co., Ltd. MAZAK FJV-25 [X1020×Y510×Z460] Simultaneous 3-axis control/1 unit
 Horizontal 3-axis machining center/Yamazaki Mazak Co., Ltd. MAZATECH FH-880 [X1300×Y1100×Z1000] Simultaneous 3-axis control/1 unit
 Vertical 3-axis machining center/DMG Mori Seiki Co., Ltd. MV-65B-50 [X1270×Y650×Z650] Simultaneous 3-axis control/1 unit
 Vertical 3-axis machining center/JTEKT Corporation FV1165S [X1100×Y1100×Z650] Simultaneous 3-axis control/1 unit



Welded products (iron)



Welded products (aluminum)



Precision welding + Precision machined products (aluminum)



Lifting stairs for large aircraft (Aluminum workbench HT-1)

A d d r e s s	2-359-1, Unuma Mitsuike-cho, Kakamigahara, Gifu 509-0146, Japan
T e l	+81-58-384-4119
U R L	http://hayashiteru-ind.co.jp
Establishment	Dec. 1983 (Started business in 1973)
Representative	HAYASHI Tatsuya, President and CEO
C a p i t a l	JPY 10million
E m p l o y e e s	8
Contact person	HAYASHI, ISO office
T e l	+81-58-384-4119
E - m a i l	info@hayashiteru-ind.co.jp

company website





HIKARI MANUFACTURE CO., LTD.

40

Technical Field	Assembly/ Subassembly	Machining	Jig and tool production	Sheet metal forming	Heat treatment	Surface treatment	Composite material manufacturing	Painting	Others
		○	○						

Main Businesses

- Transportation equipment manufacturing
- Manufacture of functional parts for automobiles

Strength

- Achievements
Our company operates three business divisions in different industries (aerospace, automobiles, medical equipment, and industrial machinery) and achieves stable profits that are difficult to be affected by fluctuations in the global economic trend.
- Technology
We continue to take on the challenge of developing "unique technologies" by leveraging our in-house technology and research and development that we have cultivated over many years.
- Quality
We ensure thorough quality control by complying with the system we have built to guarantee quality, as well as the international certifications and customer certifications we have obtained.

Certifications

JIS Q 9001, JIS Q 14001, JIS Q 9100, Nadcap

Facilities

Shibaura Machine horizontal rib processing machine MF-2560 2 units (1 each for 3 axes and 5 axes)
 Gate type machining center MCW-7140, MCW-46150, 1 each
 Shin Nippon Kikai horizontal high-speed profiler GHP-200B 2 units (1 each of 3-axis and 5-axis)
 Large vertical lathe SVT-5000C 1 unit
 Mitsui Seiki horizontal 5-axis MC Hu100-5X 3 units, Hu80-5X 6 units, Hu63A-5X 1 unit
 Makino Milling 5-axis MC MAG1 1 unit



Seki plant



Aircraft fuselage parts



Aeroengine parts

A d d r e s s	248-3 Nakano, Kasamatsu-cho, Hashima-gun, Gifu 501-6065, Japan
T e l	+81-58-387-4361
U R L	https://www.hikariss.co.jp
Establishment	1962 (Business started in 1947)
Representative	MATSUBARA Shuji, President and CEO
C a p i t a l	JPY 90million
E m p l o y e e s	340
Contact person	FUKAO, General Affairs Dept.
T e l	+81-58-387-6474
E - m a i l	g.affairs@hikariss.co.jp

company website



VR Techno Center Inc.

41

Technical Field	Assembly/ Subassembly	Machining	Jig and tool production	Sheet metal forming	Heat treatment	Surface treatment	Composite material manufacturing	Painting	Others
									Human resource development

Main Businesses

- Training and human resource development projects: training of aircraft industry engineers, 3D CAD training, training for job seekers, etc.
- SI business: VR development, robot development, business application development, provider, network business
- Tenant business: Implementation of tenant management and operation operations

Strength

- In our training and human resource development business, we conduct training in design, CAD, manufacturing engineering, integrated production, and assembly skills, mainly for human resource development in the aircraft industry. We also offer on-site lectures to support new entrants into the aircraft industry.
- In the SI business, we specialize in VR development, robot development, and business application development, and in the robot field in particular, we develop applied system products using various sensors, actuators, and embedded technology.
- In the network business, we are developing a wide range of businesses, including the commercialization of automatic tracking equipment for radio equipment that applies the technology of the Disaster Relief Aircraft Integrated Operation System (D-NET), which is being developed by JAXA.
- Through the aforementioned activities, we are contributing to the development of local industry and job creation.



Technoplaza Innovation Training



Technoplaza Monozukuri Support Center Annex 1

Address	1-1 Technoplaza, Kakamigahara, Gifu 509-0109, Japan
Te l	+81-58-379-2277
U R L	https://www.vrtc.co.jp
Establishment	April 1993
Representative	MATSUBARA Masataka, President & CEO
C a p i t a l	JPY 2,300million
E m p l o y e e s	27
Contact person	Training Sect.
T e l	+81-58-379-2281
E - m a i l	webmaster@vrtc.co.jp

company website





FUJI ENGINEERING CO., LTD

Technical Field	Assembly/ Subassembly	Machining	Jig and tool production	Sheet metal forming	Heat treatment	Surface treatment	Composite material manufacturing	Painting	Others
	○		○						

Main Businesses

- Development, design, manufacture, and sales of electronic measuring instruments that meet the unique needs of users.
- Development, design, manufacture, and sales of digital and analog measurement and automatic control equipment
- Development, design, manufacture, and sales of self-temperature-controlled sheet heating elements
- Processing of metals and resins, and design, manufacture, and sales of printed wiring boards and electrical and electronic components.

Strength

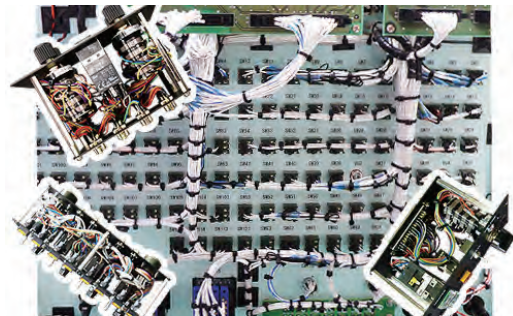
- Using environmental maintenance and processing technologies based on JIS Q 9100, and knowledge unique to the aerospace industry, we have continued to provide the best products with the pride of meeting the needs of many users for years and "heart and technology". We will do our best.

Certifications

JIS Q 9100



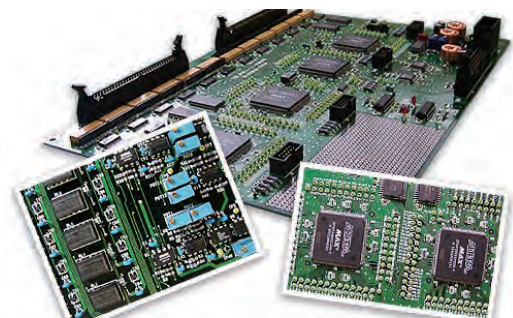
Gifuhashima site



Controller assembly/wiring parts



Special harnesses



Printed wiring boards

A d d r e s s	【Head Quarter】 111-1 Umegatsubocho, Kasugai, Aichi 486-0856, Japan 【Gifuhashima site】 402-2 Oura, Masaki-cho, Hashima, Gifu 501-6224, Japan
T e l	+81-568-85-2640
U R L	https://www.fujieng.jp/index.html
Establishment	Sept. 1998
Representative	SHIMIZU Masaaki, President & CEO
C a p i t a l	JPY 10million
E m p l o y e e s	25
Contact person	KARIYA, Sales Section 1
T e l	+81-58-372-3330
E - m a i l	kariya-r@fujieng.jp

company website



Fujiwatech Ltd.

Technical Field	Assembly/ Subassembly	Machining	Jig and tool production	Sheet metal forming	Heat treatment	Surface treatment	Composite material manufacturing	Painting	Others
		○							

Main Businesses

- Cutting process of precision mechanical parts
- Aircraft/medical equipment/semiconductor manufacturing equipment/fluid measuring equipment

Strength

- We specialize in processing and cutting extruded materials for cast aluminum products.
By collaborating with partner companies, we are able to provide integrated production from mold production to surface treatment.(wooden mold making, casting, machining, surface treatment)
- Of course, machining from steel materials such as iron, aluminum, and stainless steel is also possible.

Facilities

- CNC compound lathe 4 units
- NC lathe 1 unit
- 5-axis machining center 2units
- 4 axis machining center 4 units
- 3 axis machining center 2 units
- 3D measuring device 1 unit
- 3D scanner 1 unit



Headquarter



Processed products (aluminum)

A d d r e s s	1878 Kamiyahagicho, Ena, Gifu 509-7506, Japan
T e l	+81-573-47-2856
U R L	https://www.fujiwa-t.co.jp/
Establishment	Nov. 1997
Representative	ITO Toshiki, President & CEO
C a p i t a l	JPY 7million
E m p l o y e e s	10
Contact person	ITO Toshiki, President & CEO
T e l	+81-573-47-2856
E - m a i l	contact@fujiwa-t.co.jp

company
website



MIZUNAMI SEIKI CO., LTD.

44

Technical Field	Assembly/ Subassembly	Machining	Jig and tool production	Sheet metal forming	Heat treatment	Surface treatment	Composite material manufacturing	Painting	Others
	○	○	○						

Main Businesses

- Machining and assembly work of aircraft parts
- Development and production of household sewing machines
- Machining of automobile parts

Strength

- Aircraft parts manufacturing
Based on nearly 70 years of experience in producing aircraft parts, we not only process, but also design and manufacture jigs used in production in-house, allowing us to quickly respond to product completion. We are also involved in product assembly work, and the work is carried out by certified workers using the skills of craftsmen under strict supervision.
- Apparel equipment manufacturing
Since our founding, we have been involved in manufacturing apparel equipment, and currently produce household sewing machines. Home lock sewing machines achieve high quality through integrated production from development to manufacturing, and achieve low costs by procuring parts and manufacturing at overseas bases.
- Automotive parts manufacturing
Even in high-mix, low-volume production, we take advantage of over 70 years of automotive parts manufacturing know-how and incorporate the JIT concept into production. In addition, this JIT concept is being applied to lines such as aircraft parts manufacturing.

Certifications

JIS Q 9001, JIS Q 9100

Facilities

Horizontal machining center 8 units Vertical machining center 7 units
3D measuring device 2 units



Headquarter



Rui Lang Co., Ltd.



Sewing machine (new product Alirflow3000)

A d d r e s s	1040, Terakawadocho, Mizunami, Gifu 509-6121, Japan
T e l	+81-572-68-2101
U R L	http://www.mizunami-seiki.co.jp
Establishment	June 1951
Representative	NAGARA Koji, President & CEO
C a p i t a l	JPY 72.86million
E m p l o y e e s	94
Contact person	MIYACHI, Production control section
T e l	+81-572-68-2104
E - m a i l	s.miyachi@mizunami-seiki.co.jp

company
website



MIZUNO METAL WORKS CO., LTD.

45

Technical Field	Assembly/ Subassembly	Machining	Jig and tool production	Sheet metal forming	Heat treatment	Surface treatment	Composite material manufacturing	Painting	Others
	○	○	○						

Main Businesses

- Processing of aerospace equipment parts
- Assembly and repair of aircraft
- Design and production of various types of tools
- Processing hydraulic equipment parts

Strength

- We handle integrated production from single-item small lots to mass production, from material procurement to welding, processing, surface treatment, and subassembly.
- We also handle machining plans, design and manufacture of jigs and tools, and NC programs.

Certifications

ISO 9001, JIS Q 9100

Facilities

NC lathes (MAX ϕ 1,600mm) 20units Machining centers (MAX 6,000mm) 70units
 (We are good at processing aluminum alloys, titanium alloys, iron, stainless steel, etc)
 Three-dimensional measuring device (MAX 6,000mm) Laser tracker
 (Assembling large items on-site and conducting inspections of various sizes are available)



Headquarter



5-axis machining center

A d d r e s s	4539-10 Kurachi, Seki, Gifu 501-3936, Japan
T e l	+81-575-21-5511
U R L	https://www.miztec.jp
Establishment	Feb. 1951
Representative	MIZUNO Tomohiro, President & CEO
C a p i t a l	JPY 48million
E m p l o y e e s	175
Contact person	YAMADA, Sales section
T e l	+81-575-21-5511
E - m a i l	info@miztec.jp

company
website





Mitsuba Co., Ltd.

46

Technical Field	Assembly/ Subassembly	Machining	Jig and tool production	Sheet metal forming	Heat treatment	Surface treatment	Composite material manufacturing	Painting	Others
									Aircraft design technology

Main Businesses

- Design technology staff dispatch business to prime aircraft manufacturers
- Aeronautical design contract business
- In-factory autonomous vehicle business
- Manufacturing business for in-factory electrical display equipment, etc.
- Production business of aircraft ground support jigs (electrical equipment), etc.

Strength

- Our company mainly responds to the needs of the aircraft industry and is involved in all types of design technology-related work related to aircraft. Our engineers are also active in overseas projects.

Certifications

Worker dispatch business ("ha" 23-302119) MSJ-4000 (JIS Q 9100 equivalent)
 General Competition Qualification Certification of Equipment Procurement and Construction Office, MOD
 General Competition Qualification Certification of all ministries and agencies/Cabinet Office, etc.

Facilities

CATIA V5 2 units fusion 360 1 unit Nastran 1 unit Electronic measuring equipment 1set
 Electronic work equipment 1set, etc.



Headquarter(Nagoya)



Gifu Office(Kawasaki Life Gifu Build. BF)

A d d r e s s	【Head Quarter】 3-69-1 Johokuchō, Nishi-ku, Nagoya, Aichi 451-0023, Japan 【Gifu office】 Kawasaki Life Gifu Build. 2 Kawasaki-cho, Kakamigahara, Gifu 504-0971, Japan
T e l	+81-52-521-4663
U R L	http://www.nets-mitsuba.co.jp
E s t a b l i s h m e n t	June 1983
R e p r e s e n t a t i v e	HASEGAWA Hisami, President & CEO
C a p i t a l	JPY 30million
E m p l o y e e s	105
C o n t a c t p e r s o n	OHASHI Takashi, Aerospace Engineering Div.
T e l	+81-58-375-3203
E - m a i l	t_oohashi@nets-mitsuba.co.jp

company
website



Technical Field	Assembly/ Subassembly	Machining	Jig and tool production	Sheet metal forming	Heat treatment	Surface treatment	Composite material manufacturing	Painting	Others
									material sales, NDI

Main Businesses

- **Material sales**
Our company performs secondary processing (heat treatment, pickling painting, drawing processing) of automotive fastener materials, and mainly provides wire rods to customers.
In recent years, we have entered the aircraft business and started handling aircraft materials.
We offer AMS standard low alloy steel (SAE8740), stainless steel (15-5PH, 17-4PH), aluminum, and titanium.
- **Non-destructive inspection**
We introduced a fluorescence penetrant inspection system in June 2016 and obtained Nadcap certification in March 2018. Fluorescent penetrant testing can be performed on aerospace parts.

Strength

- **Material sales**
By procuring AMS standard materials from overseas and cutting them ourselves, we will provide the length according to your request.
Depending on the amount used, we will procure several years' worth of supplies in bulk and keep them in stock at our company.
Therefore, low prices, short delivery times, and small quantity production are possible.
- **Non-destructive inspection**
We can also handle short delivery times and small lots, which other companies cannot do.
Two types of tests are possible: penetrant testing and magnetic particle testing.
If you would like non-destructive inspection of large parts such as jigs and tools or parts that are difficult to handle, our inspectors will travel to your designated location and conduct the inspection.
We can also perform etching on titanium, so please leave it to us for penetrant testing of aircraft engine parts.

Certifications

ISO 9001, ISO 14001, JIS Q 9100, Nadcap(PT)

Facilities

【Cutting machine】

- Carbide circular saw cutting machine: General steel/stainless steel bar material, up to $\phi 10\sim 70\text{mm}$ is available.
- Chucking type cutting machine: Aluminum bar, up to width W300 x H200mm is available.
- Band saw cutting machine: General steel bars including stainless steel and titanium, up to $\phi 20\text{mm}$ to 260mm is available.

【Non-destructive inspection】

- Penetrant testing: Type I according to ASTM E 1417 and JIS Z 2343, Method A&B&C&D, Form A, Sensitivity Level 3 are available.
- Magnetic particle inspection: Pole spacing method based on JIS Z 2320 is available.



Penetrant testing equipment



Various types of steel bars

A d d r e s s	1-8-1, Hachiyadai, Minokamo, Gifu 505-0039, Japan
T e l	+81-574-24-0628
U R L	http://www.meihoku-kogyo.co.jp
Establishment	Oct. 1947
Representative	FUKUNISHI Yasukazu, President & CEO
C a p i t a l	JPY60million
E m p l o y e e s	211
Contact person	NISHIMURA, Sales Dept.
T e l	+81-574-24-0628
E - m a i l	kazu.nishimura@meihoku-kogyo.co.jp

company
website





MEIRA Corporation

Technical Field	Assembly/ Subassembly	Machining	Jig and tool production	Sheet metal forming	Heat treatment	Surface treatment	Composite material manufacturing	Painting	Others
	○	○	○		○	○		○	

Main Businesses

- Manufacture and sale of bolts and precision cold forged parts for automobiles and general industries
- Assembly of bolts, nuts and rods and manufacture and sale of integrated machine processing parts for aerospace
- Manufacture and sale of medical (orthopedics) screws, plates, and implant

Strength

- [Integrated production] Meira is self-sufficient in materials and is capable of integrated production including special processes such as various processing, heat treatment, non-destructive testing, surface treatment, painting, and assembly.
- [Self-sufficient materials] We handle low-alloy steel, ultra-high tensile steel (300M, H-11, 4340, MP159 etc), corrosion-and-heat resistant steel (A286, 15-5PH, PH13, 8Mo etc), heat-resistant alloy steel (Inconel 718, Waspaloy, Nimonic, etc.), titanium alloy (Ti-6Al-4V etc) and aluminum alloy (2024, 6061, 7075 etc.)
- [Heat treatment] Vacuum hardening furnace for low alloy steel and ultra-high tensile strength steel, vacuum furnace for solution treatment and precipitation of heat-resistant and corrosion-resistant steel and super heat-resistant alloy steel, aluminum heat treatment furnace, solution treatment furnace exclusively for titanium, tempering and precipitation treatment furnace, Sub-zero furnace, stress relief furnace, etc.
- [Non-destructive testing] Magnetic particle testing equipment, Zygro testing equipment, temper etching testing, material analysis equipment (X-ray fluorescence analysis/emission spectroscopy), etc.
- [Surface treatment] Cadmium plating (brite, ambrite, titanium cadmium), zinc nickel plating, aluminum alumite (chromic acid method, sulfuric acid method, boric acid sulfuric acid method), aluminum conversion coating treatment, titanium etching, passivation treatment, black oxide film treatment, shot peening, etc.
- [Painting] Primer coating, top coating such as polyurethane enamel, fuel tank interior coating, titanium sol-gel coating, aluminum spray coating, etc.
- [Assembly] Cold fitting of bushes, caulking of bearings, assembly of sealant-treated rods, etc.
- [Inspection] Coordinate measuring machine, tensile/compression universal testing machine, fatigue testing machine, rupture testing machine, S/L NUT torque measuring machine, scanning electron microscope, etc

Certifications

JIS Q 9100, ISO 14001, NADCAP (AC 7102, AC 7108, AC 7114, AC 7117)



Address	[Head Quarter] 17-15 Tsubaki-cho, Nakamura-ku, Nagoya, Aichi 453-0015, Japan [Seki Plant] 81-1 shin-hazama, Seki, Gifu 501-392, Japan
Te l	+81-52-459-1276
U R L	https://www.meira.co.jp
Establishment	June 1932
Representative	OHASHI Makoto, President & CEO
Capital	JPY 330 million
Employees	710
Contact person	YOKOI, Aerospace Sales Dept.
Te l	+81-52-459-1276
E - m a i l	h_yokoi@meira.co.jp





Technical Field	Assembly/ Subassembly	Machining	Jig and tool production	Sheet metal forming	Heat treatment	Surface treatment	Composite material manufacturing	Painting	Others
	○	○	○	○			○		

Main Businesses

- Aerospace field: sheet metal parts processing, composite material parts molding, machining, sub assembly, jig manufacturing, etc.
- Medical equipment field: Manufacture of complex medical equipment (implants, surgical instruments, etc.)

Strength

- Aerospace field: handling a wide variety of parts processing, such as sheet metal parts for commercial aircraft and composite material parts for defense aircraft.
- Medical equipment field: expanding into new markets by replacing conventional metal implants for fracture treatment with carbon ones.

Certifications

JIS Q 9100, JIS Q 9001

Facilities

Autoclave: φ2000×L4000 1 unit

Autoclave: φ300×L1000 1 unit

Stretch former: 20 tons 2 units

Stretch former: 50 tons 1 unit

Machining Centers with 5 Simultaneously Controlled Axes 7 units

CNC Coordinate Measuring machine Z1000×W1600×L3000 1 unit

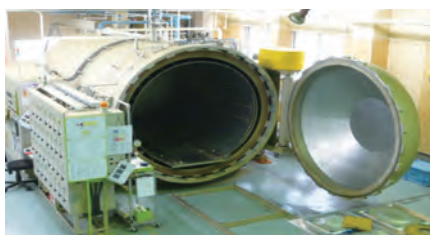
Non-contact three-dimensional measuring machine 1unit



Stretch former



Headquarter



Autoclave



Carbon-made medical equipments

A d d r e s s	1-15-6, Sohara Kitayama-Cho, Kakamigahara, Gifu 504-0801, Japan
T e l	+81-58-382-1151
U R L	http://www.yashima-mfg.co.jp
Establishment	Sept. 1973
Representative	INOUE Ryosuke, President and CEO
C a p i t a l	JPY 15million
E m p l o y e e s	103
Contact person	NAKASHIMA, Managing Director
T e l	+81-58-382-1151
E - m a i l	nakashima-ka@yashima-mfg.co.jp

company
website





YOSHITECH CO.,LTD.

Technical Field	Assembly/ Subassembly	Machining	Jig and tool production	Sheet metal forming	Heat treatment	Surface treatment	Composite material manufacturing	Painting	Others
			○						

Main Businesses

- Design and manufacture of anti-earthquake reinforcement construction products for bridge-girders and architectural buildings
- Design and manufacture of steel beams for various plant systems
- Design and manufacture of trestles for assembling aircraft and helicopters
- Design and manufacture of can manufacturing products (square and round tanks, trestles, walkways and stairs).
- Design and manufacture of bridge-girders relevant equipment, molds, scaffolding, metal brackets.
- Design and manufacture of architectural steel beams and relevant components

Strength

- We are a young and energetic company that keeps on moving forward with the aim of new creation and reliable technology by realizing technologies that other companies cannot do and things that other companies do not do.
- Quality Policy: "We contribute to society by developing excellent employees with superior quality that further secures the trust of our customers."

Certifications

H grade certification in steel frame fabrication factory performance evaluation (MLIT) ISO9001

Facilities

CCNC drill machine (Showa Seiko TCV8025LD) 1unit,
 Laser cutting machines (Komatsu NTC TLV-510E40F, TLV-510K40F) 1unit each,
 Shaped steel beveling machine (Hattery Precision HQB-1055NS, Shinx MHV-1050NCA) 1 unit each,
 Multifunction machine (automatic length measurement) (Takeda Machinery CBF-4020W) 1unit,
 Large pillar assembly welding robot system (Kobe Steel, Ltd. 10T-800MP2) 1unit,
 Steel core connection welding robot system (Kobe Steel, Ltd. ARCMAN-MP) 1unit,
 Shot room (Atsuji Tekko)1unit,
 Drill machine (Daito Seiki CUD3C 1050) 1unit,
 Steel plate beveling machine (Shinx VXW-3000-5) 1unit,
 Shot machine (Sintokogyo KACX-IIA) 2units,
 Band saw (Amada H-750D/HA-400...1 unit each,
 Daito Seiki ST5070, ST5080, GT7010CNC...1 unit each),
 Lifting-type cantilever three-axis positioner
 (Lineworks SKETTE2000C) 2units



Headquarter

A d d r e s s	1115-1 Shimokata, Ono-cho, Ibi-gun, Gifu 501-0523, Japan
T e l	+81-585-34-3899
U R L	https://www.yoshitech.co.jp
Establishment	June 2002
Representative	OKUMURA Shuichi, President and CEO
C a p i t a l	JPY 30million
E m p l o y e e s	81
Contact person	MATSUO, Sales Dept.
T e l	+81-585-34-3899
E - m a i l	yoshitech01@yoshitech.co.jp

company
website





Technical Field	Assembly/ Subassembly	Machining	Jig and tool production	Sheet metal forming	Heat treatment	Surface treatment	Composite material manufacturing	Painting	Others
	○	○	○	○					laser cutting

Main Businesses

- Aircraft parts manufacturing
- Rolling Stock parts manufacturing
- Jig and tool manufacturing

Strength

- The aircraft division specializes in small-lot and/or high-mix parts processing, rubber trimming processing, and custom-made jig and tool production.
- The rolling stock division specializes in welding thin aluminum sheets. In addition to our advanced welding techniques, we also use ingenuity through development and tooling(jigs).

Certifications

JIS Q 9100, JIS Q 9001

Facilities

Fiber laser compound machine LS3015HL Custom-made cutting machine with sizing device
 NC press brake BH8525/BH13530NC Welding machine (TIG, MIG, CO2, stud, spot)
 CAD/CAM system Machining center MB66-VB Coordinate measuring instrument RVA1000-S24"



Technoplant



welding process



Automatic mounting machine



Assembly model (original product)

A d d r e s s	2-33 Technoplaza, Kakamigahara, Gifu 509-0109, Japan
T e l	+81-58-322-3135
U R L	https://www.wako-gifu.co.jp
Establishment	Dec. 1972
Representative	HASHIMOTO Atsunori, President & CEO
C a p i t a l	JPY 10million
E m p l o y e e s	60
Contact person	HASHIMOTO, General Affairs Dept.
T e l	+81-58-322-3135
E - m a i l	c-hashimoto@wako-gifu.co.jp

company
website



Information on Support Measures

For the aerospace enterprises in Gifu prefecture and the aerospace enterprises considering expanding their business into Gifu Prefecture!

★ Special Zone to create Asia's No.1 Aerospace Industrial Cluster

Designated enterprises can enjoy some benefits such as interest subsidies and deregulation on green space restriction.

★ One-stop Service for the Aerospace industry

We have deployed coordinators in Kakamigahara branch of Gifu Economic and Industrial Promotion Center to provide various supports fit for the Aerospace industry needs.

● Supports for Exhibitions and Business Matchings

We cover spot fees for exhibitions (such as the International Aerospace Exhibition) and business matchings. Also, we provide advices for preparation of the presentation materials used for the said events!

● Supports for Developing Human Resources

We hold seminars that provide information and knowledge useful for expanding business in the aerospace industry!

● Support for SME and SME groups in the Prefecture (subsidy for business expenses to support strengthening competitiveness in aerospace and drone industries)

We provide subsidies up to 10 million yen for projects such as building new production systems and developing new technologies, new construction methods, and new products in the aerospace and drone fields!

★ Human resources development business

Techno Plaza Monozukuri Support Center (Kakamigahara) provides specific trainings for employees of aerospace industry.



Exhibiting at international aerospace exhibitions and business meetings



Aerospace seminar



Training facility equipped with specific tools



specific trainings for employees of aerospace industry.

★ Subsidy system for establishing business places

● Gifu Prefecture Business Location Promotion Project Subsidy

We subsidize up to 1 billion yen for a portion of the initial expense on acquiring new production and R&D facilities (sites, buildings and depreciable assets etc.) in Gifu.

In addition to the above, some industries including aerospace industries may enjoy some benefits in accordance with the deregulation on real-estate acquisition tax as well.

● Gifu Prefecture Large-scale Vacant Factory Companies Attraction Subsidy

We subsidize up to 1 billion yen for a portion of the initial expense on acquiring new fixed assets in areas where large-scale production facilities were previously located.

● Gifu Prefecture Head Office Function Transfer Promotion Project Subsidy

We subsidize up to 1 billion yen for a portion of the initial expense on acquiring new fixed assets to the enterprise from outside the prefecture relocates all or part of its head office function to within the prefecture.

★ Arrangement of factory site

We provide information on factory sites and various support systems according to the needs of the enterprises looking for the site to build factories within the prefecture.

★ Gifu Prefecture Small and Medium Enterprise Support Measures Usage Guidebook

Gifu Prefecture provides a guidebook to meet the needs of small and medium-sized businesses and help them make better use of the prefectural measures.

Please download from Gifu Prefecture's official website.

URL : <https://www.pref.gifu.lg.jp/page/9732.html>



Corporate exhibition pamphlet introducing municipal factory sites



Business meeting at corporate exhibition

