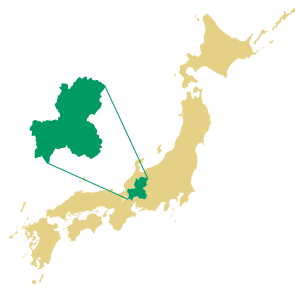


# A Statistical Guide to **Gifu** Prefecture



Prefectural Flower

## **RENGE : The Chinese Milk Vetch**

The *renge* was chosen as Gifu's Prefectural flower by the public in March 1954. This flower represents the idyllic scenery of spring time.



Prefectural Tree

## **ICHII : The Yew**

The *ichii* was used to make *shaku*, or ornamental scepters used as offerings to the emperor in ancient times. The name *ichii* stems from the title of *Sho-Ichii*, the highest rank bestowed by the emperor to *shaku* manufacturers.

Prefectural Bird

## **RAICHO : The Ptarmigan**

The *raicho* inhabits mountains in the Japan Alps at altitudes exceeding 2,400 meters above sea level. Its feathers are brown in summer, turning white in winter. This bird is a nationally protected species.



Picture Provided by Yukitoshi Otsuka

Prefectural Fish

## **AYU : The Sweetfish**

The *ayu* is widely appreciated for its beautiful appearance and sweet taste. This fish is well-known all over the country for its association with *ukai*, cormorant fishing on the Nagara River.



# Location of Gifu Prefecture and Features of Each Region

## Situated in the Heartland of Japan

Gifu is one of Japan's few landlocked prefectures, situated approximately in the center of the Japanese archipelago. It takes about 1 hour by train from Chubu Centrair International Airport to Gifu Prefecture.

Gifu is conveniently close to the three major cities

of Japan: It takes about 1 hour and 40 minutes from Tokyo to Nagoya by bullet train (*Shinkansen*), about 50 minutes from Osaka to Nagoya by *Shinkansen*, and about 20 minutes from Nagoya to Gifu by local express train.



## Gifu Prefecture Has the Mino and Hida Regions

Gifu Prefecture has the Mino region in the south and the Hida region in the north.

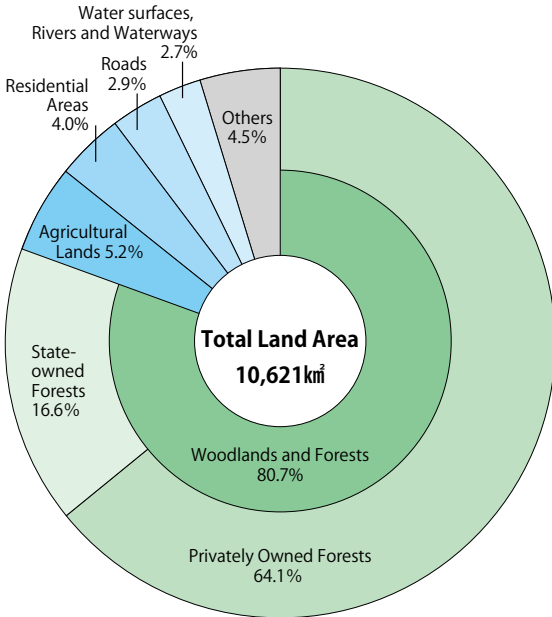
The Mino region is famous for its apparel, aircraft, and IT industries, as well as traditional industries such as *Hon Minoshi* (Japanese paper) registered as a UNESCO Intangible Cultural Heritage, cutlery, and Mino Ceramics. In the Hida region, local industries such as woodworking and *Shunkei* lacquerware are thriving.



Mino-yaki Ceramic Ware

# Land

## Distribution of Land Usage (2022)



Source : Gifu Prefectural Government

## Total Land Area: 10,621 Square Kilometers 2.8% of Japan's Total Landmass Ranked 7th Out of 47 Prefectures in Japan

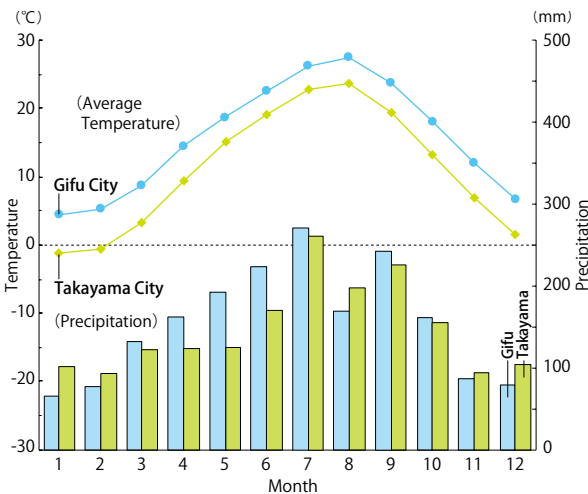
Gifu is situated approximately in the center of the Japanese archipelago, occupying a total land area of approximately 10,621 square kilometers, or 2.8% of Japan's total landmass. Of this area, approximately one quarter is made up of highlands, which exceeds 1,000 meters above sea level. Gifu has a rich natural environment, with 80.7% of the prefecture covered by woods and forests. The northern and eastern parts are mountainous and the Nobi Plain expands across the southern part, where beautiful rivers flow, converging in the riverside area at sea level.



The Nagara River flowing through the Nobi Plain

# Climate

## Average Monthly Temperature/ Precipitation in Gifu City and Takayama City



Source : Japan Meteorological Agency

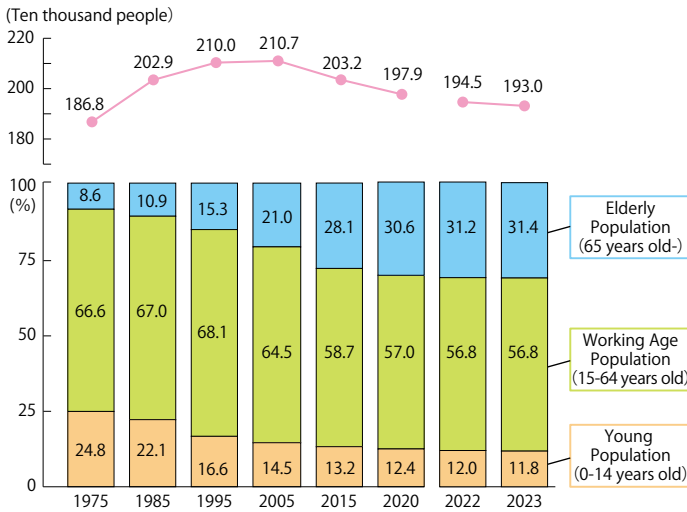
Note : Average temperature/precipitation figures from 1991 to 2020

## There Is a Large Difference in Climate Between the Mino and Hida Regions

There is a large difference in climate between the Mino and Hida regions of Gifu Prefecture. The average temperature from 1991 to 2020 in Gifu City in the south (Mino region) is 16.2°C under mild climates, whereas Takayama City in the north (Hida region) is 11.4°C under cold climates. The Hida region is covered with heavy snow in winter.

# Population

## Proportion of Population by Age (3 Groups)



Source: Ministry of Internal Affairs and Communications, Gifu Prefectural Government

## Population : 1,929,669

The population of Gifu has been decreasing since 2005, being 1,929,669 in 2023, a decrease of 15,681 from the previous year. There are 792,325 households in 2023, resulting in an increase of 4,512 year on year. Each household has on average 2.44 family members in the 2023 survey, while the figure was 2.47 in 2022. These statistics indicate a trend towards a reduction in household size.

## Registered Foreign Residents in Gifu Prefecture

(June30, 2023)

Country	Number of Residents	Composition Percentage %	Difference with the Previous Year
Philippines	14,995	22.9	△ 0.3
Vietnam	12,787	19.5	1.1
Brazil	12,125	18.5	△ 0.9
China	9,063	13.8	△ 1.8
Korea(ROK)	3,264	5.0	△ 0.5
Indonesia	2,545	3.9	1.3
Nepal	2,086	3.2	0.4
Myanmar	1,334	2.0	—
USA	429	0.7	0.0
Taiwan	173	0.3	0.0
Others	6,674	10.2	△ 1.5
<b>Total</b>	<b>65,475</b>	<b>100.0</b>	

Source : Immigration Services Agency of Japan

## Foreign Residents : 65,475

The number of registered foreign residents in Gifu Prefecture amounts to 65,475. Among them, there are 14,995 Filipinos, 12,787 Vietnamese, 12,125 Brazilians, and 9,063 Chinese. The combined population of these four nationalities accounts for 74.8% of the total number of registered foreign residents in the prefecture.

# Economy

Item	Gifu	Japan	Year	Source
Gross Prefectural Product / Gross Domestic Product	71.3 (USD billion) 8.0 (JPY trillion)	5,032.8 (USD billion) 549.4 (JPY trillion)	2021	1
Primary Industry Proportion	0.7%	1.0%		
Secondary Industry Proportion	37.2%	26.7%		
Tertiary Industry Proportion	62.1%	72.3%		
Number of Companies	92,210	5,156,063		2
Number of Employees	884,667	57,949,915		

Sources: 1. Cabinet Office, Government of Japan, and Gifu Prefectural Government

2. Ministry of Internal Affairs and Communications, and Ministry of Economy, Trade and Industry

Notes: 1. Gross Prefectural Product shown above is from FY2021 (April 2021 - March 2022).

2. Gross Domestic Product shown above is from CY 2021 (January 2021 - December 2021).

## Agriculture

### Major Agricultural, Livestock, and Fishery Products (2022)

Item	Production Volume	National Ranking
Rice	100,800 t	26
Chestnut	748 t	4
"Kaki" Japanese Persimmon	16,200 t	4
Japanese Summer Radish	7,060 t	5
Spinach	11,000 t	6
Tomato	27,200 t	7
Green Soybean	1,210 t	12
Beef Cattle	32,900	21
Dairy Cattle	5,450	28
Horticultural Potted Plant	11,400,000	4
Ayu (Fishing)	181 t	5
Ayu (Aquaculture)	861 t	2
Trout (Aquaculture)	339 t	6

Source: Ministry of Agriculture, Forestry and Fisheries



Cattle raised among the bountiful nature of Gifu

### Large Variety of Products

A large variety of agricultural products, which are suited to the natural features of each region, are grown throughout the year in Gifu Prefecture. In the Mino region, rice is cultivated in the warm climate plains, as well as tomatoes, spinach, persimmons, and summer radishes. In the Hida region, vegetables, including summer-autumn tomatoes and summer spinach are produced in the cool climate plateaus. In addition, beef cattle are raised, and dairy farming is conducted in the mountain areas. In the fishing industry, river fisheries and aquaculture are conducted mainly for *ayu* (sweetfish) and trout.



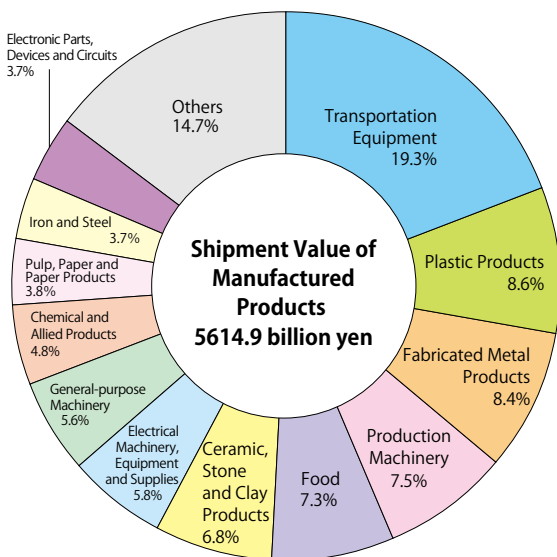
Fuyugaki Persimmons



Edamame Green Soybeans

# Industry

## Proportion of Shipment Value of Manufactured Products by Industry (2020) (Establishments with 4 or More Employees)



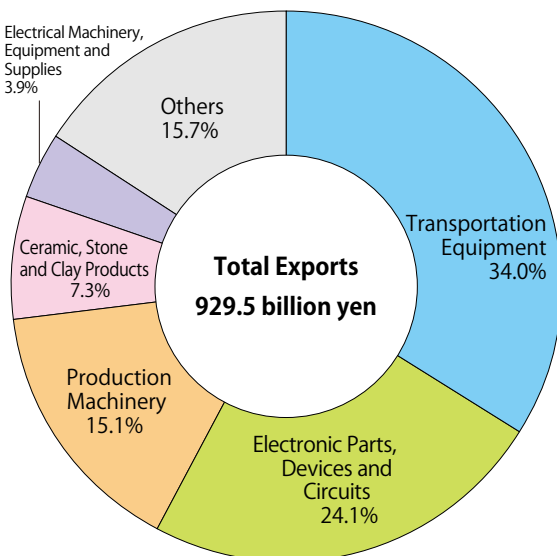
Source : Ministry of Internal Affairs and Communications, and Ministry of Economy, Trade and Industry

## Shipment Value of Manufactured Goods: 5,614.9 billion yen

With regard to the value of manufactured goods shipments among the industries of Gifu Prefecture, transportation equipment was highest at 1,086.5 billion yen (19.3% of the total shipment value), followed by plastic products at 481.4 billion yen (8.6%). As to the number of business places, fabricated metal products (684 business places: 12.9% of the total number) is the highest in the manufacturing sector, followed by ceramic, stone and clay (650: 12.3%), and production machinery (569: 10.7%).

# Export

## Proportion of Exports by Industry (2022)



Source : Gifu Prefectural Government

## Total Exports: 929.5 billion yen

As for export products from this prefecture, the manufacture of transportation equipment was highest at 315.9 billion yen, followed by the manufacture of electronic parts, devices and circuits at 223.6 billion yen, and the manufacture of machinery used in production at 140.1 billion yen. Asia is the largest export destination at 455.2 billion yen, accounting for about half of the total. By country, China was highest at 126.4 billion yen, followed by the U.S. at 126.0 billion yen and Malaysia at 93.8 billion yen.



# Tourism



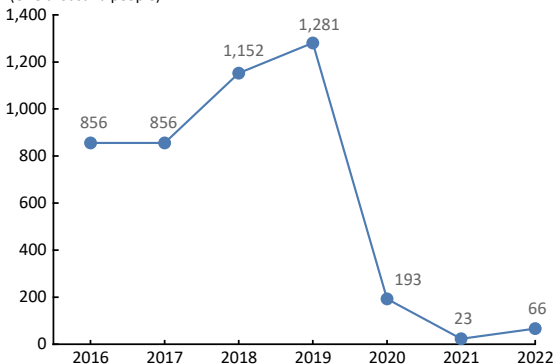
Picture Provided by the Shirakawa Village Office (Gifu)  
The World Heritage Site *Shirakawa-go*

## Gifu Prefecture, Blessed with Attractive Tourism Resources

Gifu Prefecture is full of appeal, such as a rich natural environment represented by beautiful mountains and clean rivers, and a traditional culture that has been nurtured by the people since ancient times. Approximately 43 million tourists visited the prefecture in 2022.

### Total Number of Foreign Overnight Visitors

(One thousand people)



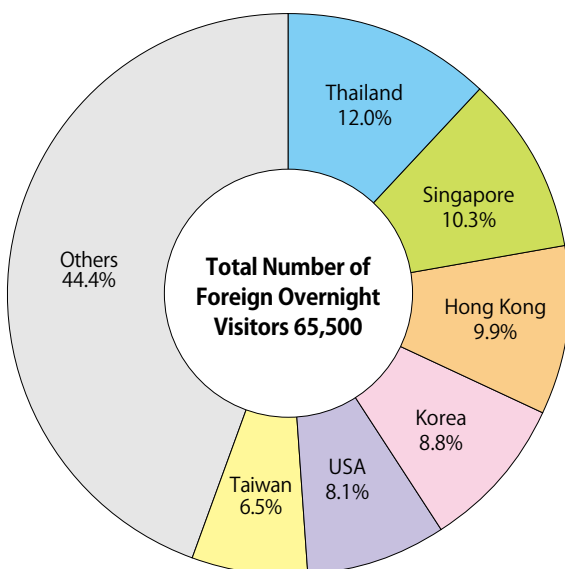
Source : Japan Tourism Agency

Note : The survey was conducted on accommodation facilities with 10 or more employees.



*Magome-juku*, an old post town on the Nakasendo road

### Percentage of Foreign Overnight Visitors by Country and Region (2022)



Source : Japan Tourism Agency

Notes : 1. The survey was conducted on accommodation facilities with 10 or more employees.

2. "Others" include those whose nationalities (birthplaces) are unknown.

### Total Number of Foreign Overnight Visitors: 65,500

Total number of foreign overnight visitors in 2022 was 65.5 thousand, showing an increase from the previous year. However, it was approximately 95% reduction compared to the pre-COVID-19 year (2019). In terms of the number of foreign overnight visitors by nationality (place of birth), Thailand ranked first at 12.0%, followed by Singapore at 10.3%, and Hong Kong at 9.9%.



*Gujo Hachiman Castle*

# Facts about Gifu Prefecture

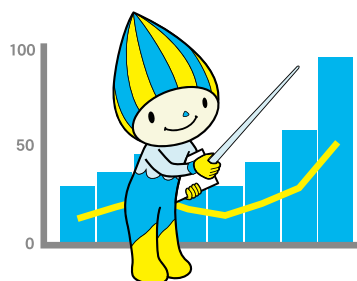
	Gifu Prefecture	Japan	Unit	Year	Source
Total Land Area	10,621.29	377,974.79	km <sup>2</sup>	2023	1
Proportion of Forest Area to Total Land Area	78.9	64.3	%	2020	2
Total Population	1,931	124,352	thousand person	2023	3
Population Density	181.8	333.4	persons/km <sup>2</sup>	2023	1,3
Average Life Expectancy (Male)	81.90	81.49	years old	2020	4
Average Life Expectancy (Female)	87.51	87.60	years old	2020	4
Gross Prefectural Product (Gross Domestic Product)	8,011.0	553,642.3	billion yen	FY2021	5
Prefectural Income per Person (National Income per Person)	3,092	3,153	thousand yen	FY2021	5
Gross Agricultural Product	112.9	9,001.5	billion yen	2022	6
Industry (Shipment Value of Manufactured Products) *Establishments with 4 or more Employees Excluding Sole Proprietorships	5,614.93	302,003.27	billion yen	2020	7
Commerce (Annual Sales of Commercial Goods)	4,446.26	539,813.95	billion yen	2020	7
Number of Foreign Overnight Visitors *Those who stayed at accommodation facilities with 10 or more employees	65,500	13,607,790	person-night	2022	8
Capacity of Hydro-energy Generation (Potential Water Power)	13,559	136,339	GWh	2022	9
Regional Difference Index of Consumer Prices (National Average of 258 Cities: 100) *Composite Index Excluding the Imputed Service of Owner-occupied Dwellings	97.2	100.0		2022	10

## Sources

1. Geospatial Information Authority of Japan. *Land Survey of Prefectures, City, Ward, Town and Village*
2. Ministry of Agriculture, Forestry and Fisheries. *Census of Agriculture and Forestry*
3. Ministry of Internal Affairs and Communications. *Population Estimates*
4. Ministry of Health, Labour and Welfare. *Life Tables by Prefecture*
5. Gifu Prefectural Government. *Report on Prefectural Accounts*  
Cabinet Office, Government of Japan. *Report on National Accounts*
6. Ministry of Agriculture, Forestry and Fisheries. *Gross Agricultural Output*
7. Ministry of Internal Affairs and Communications, and Ministry of Economy, Trade and Industry. *Census of Commerce - Activity Survey*
8. Japan Tourism Agency. *Statistical Research on Overnight Travel*
9. Agency for Natural Resources and Energy, Ministry of Economy, Trade and Industry. *Capacity of Hydro-Energy Generation in Japan*
10. Ministry of Internal Affairs and Communications. *"Structural Survey" of the Retail Price Survey*

## Notes

1. Figures for the sum of breakdown and total may not match in some cases due to rounding calculations.
2. Gross Prefectural Product (Gross Domestic Product) and Prefectural Income per Person (National Income per Person) are for FY 2021 (April 2021 - March 2022).



MINAMO : The official mascot of Gifu Prefecture, the "Land of Clear Waters"

Publisher : **Statistics Division**  
**Gifu Prefectural Government**

Printed August, 2024

2-1-1 Yabuta-minami, Gifu City, Gifu Prefecture, Japan 500-8570

Tel +81-58-272-1111 (Ext 3068)

Fax +81-58-271-5720

E-mail c11111@pref.gifu.lg.jp

This leaflet can also be viewed on the web.

<https://www.pref.gifu.lg.jp/site/english/5181.html>

