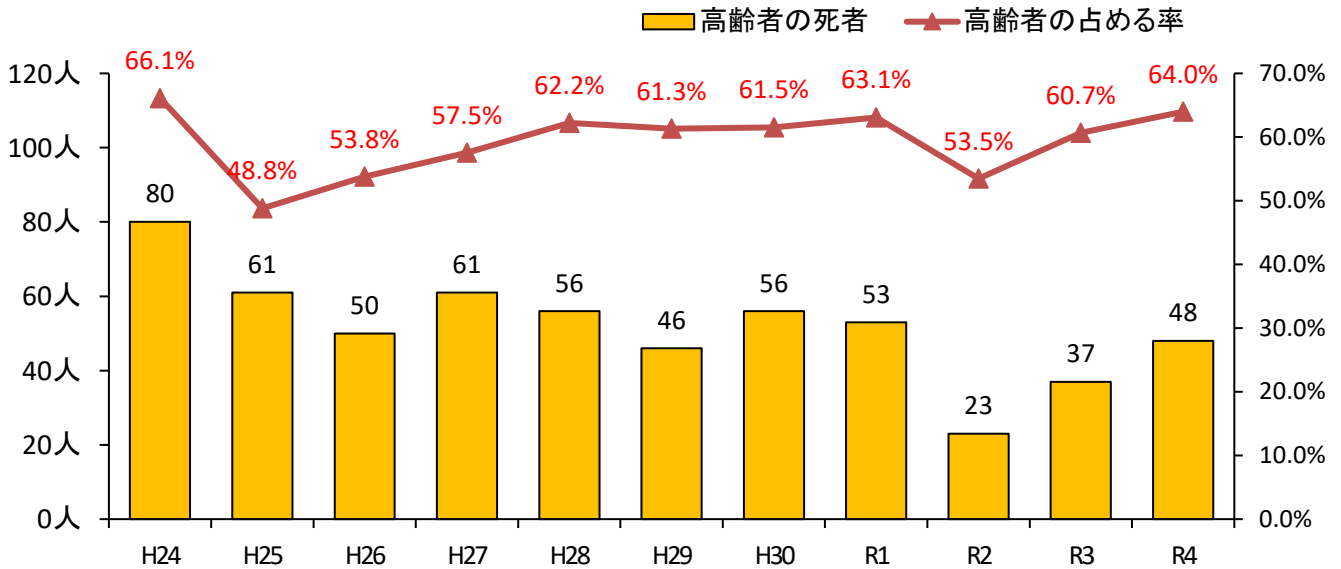
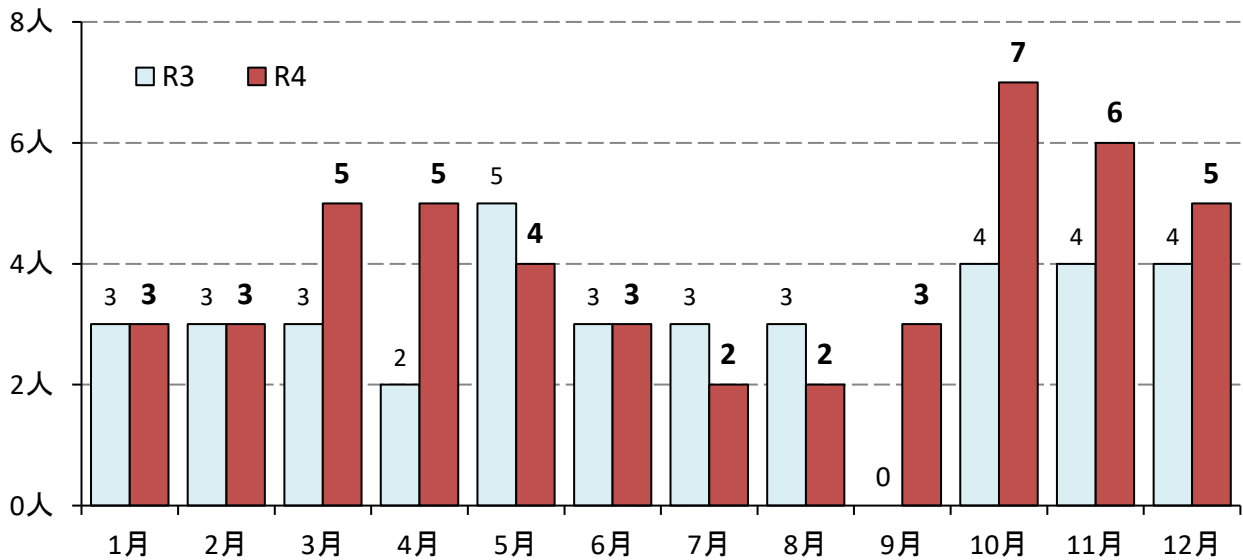


# 令和4年中の高齢者が関係する交通死亡事故

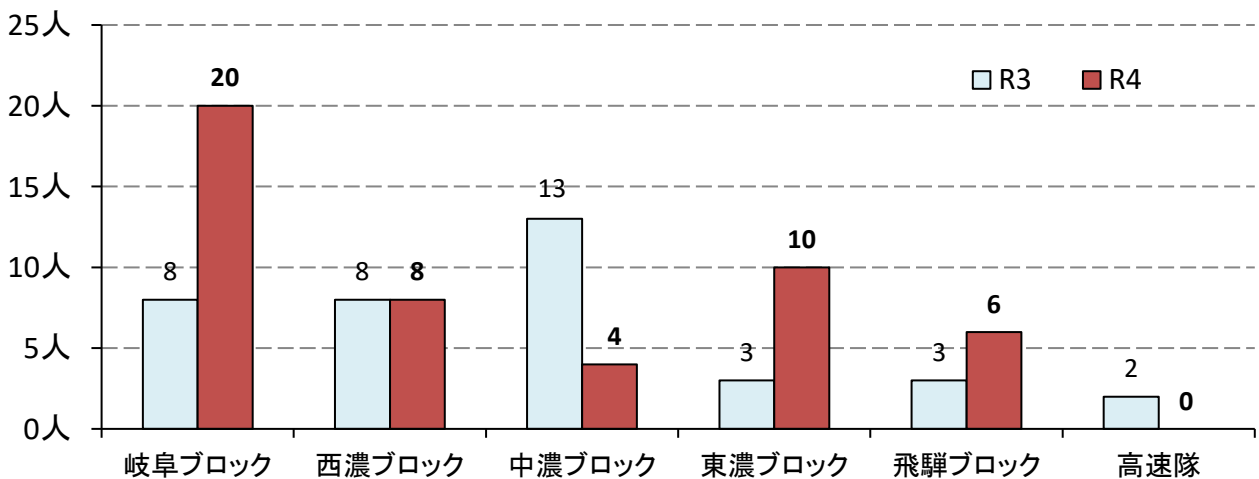
## 1 交通事故死者の年別推移(過去10年間)



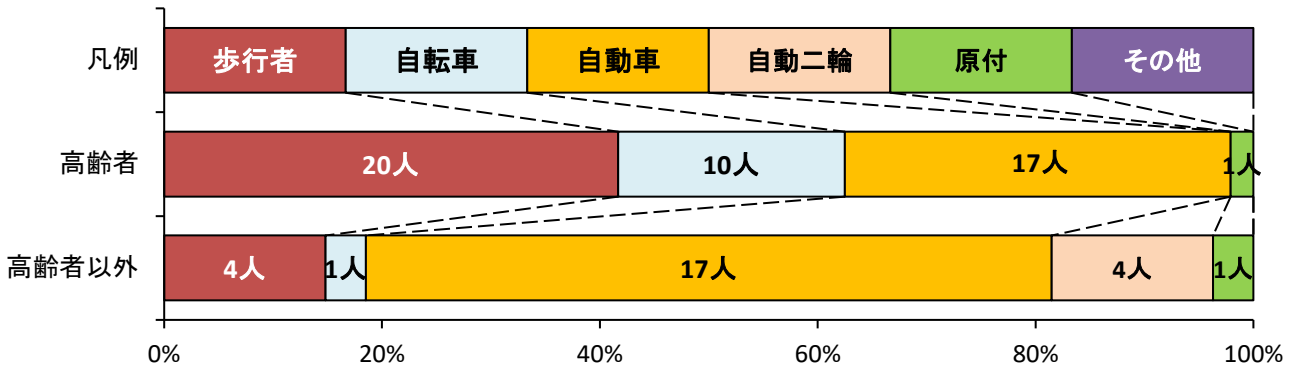
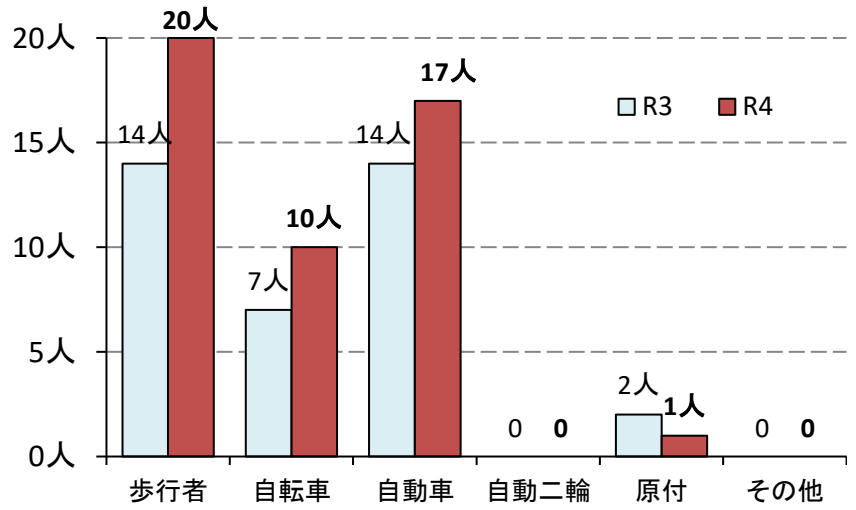
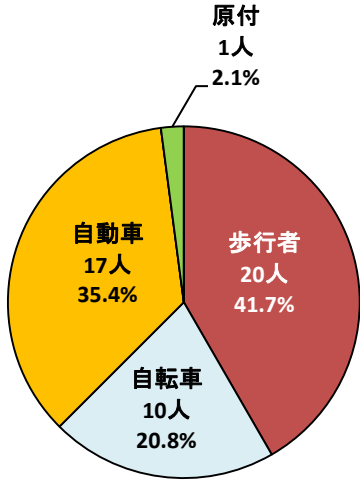
## 2 月別発生状況(死者数)



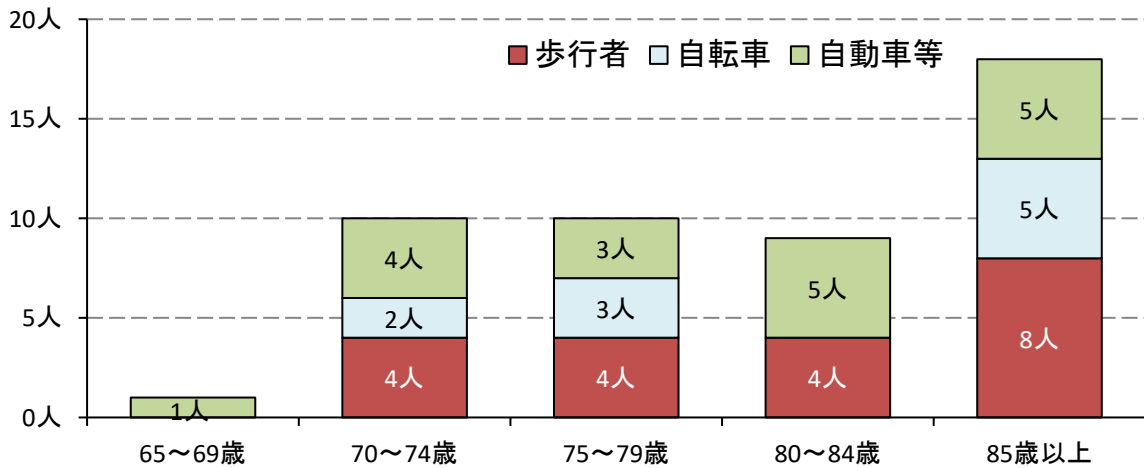
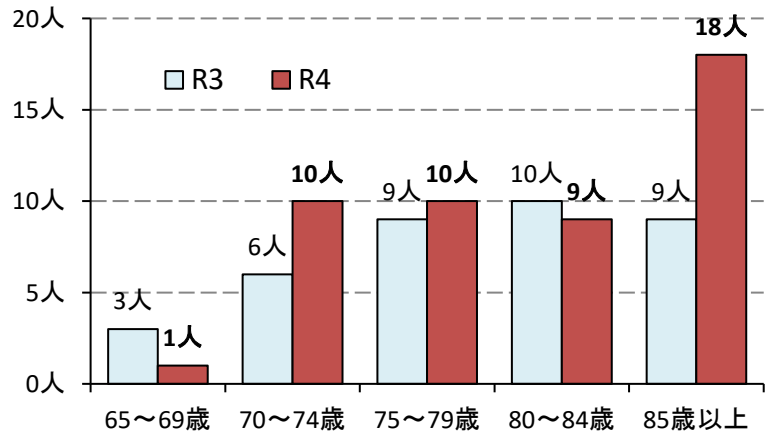
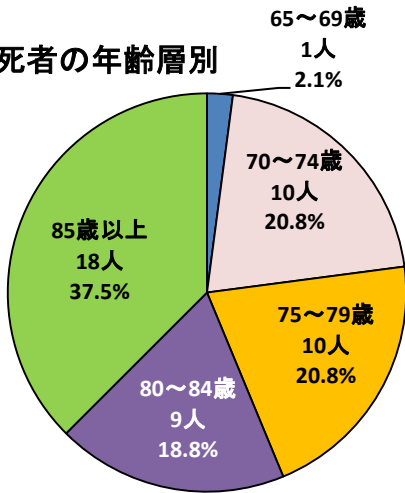
## 3 ブロック別発生状況(死者数)



#### 4 死者の状態別

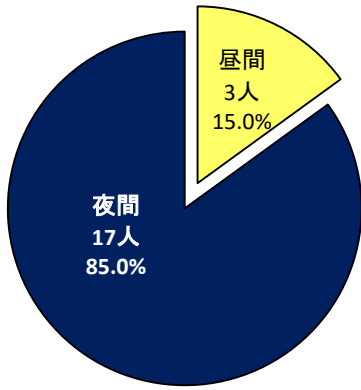


#### 5 死者の年齢層別

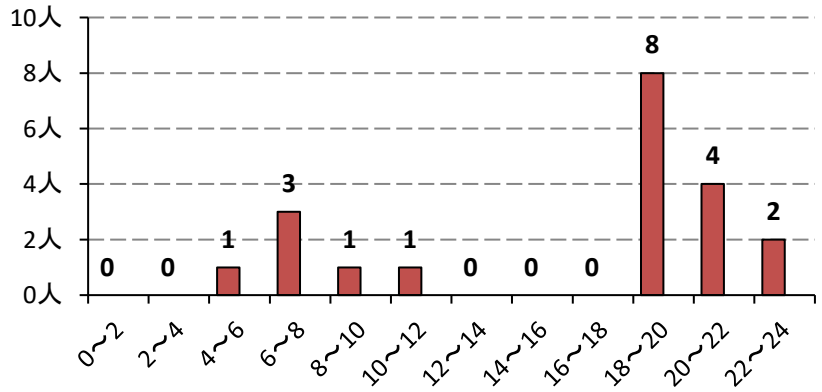


## 6 歩行者の死者

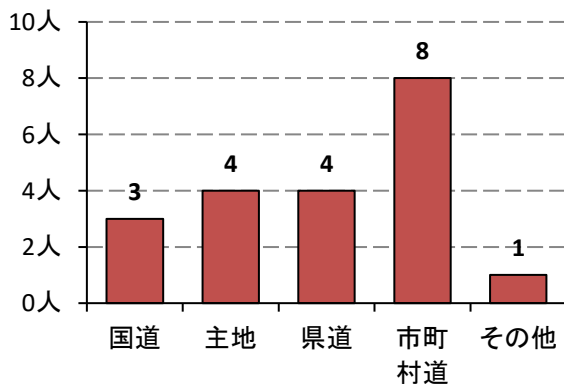
### (1) 昼夜別



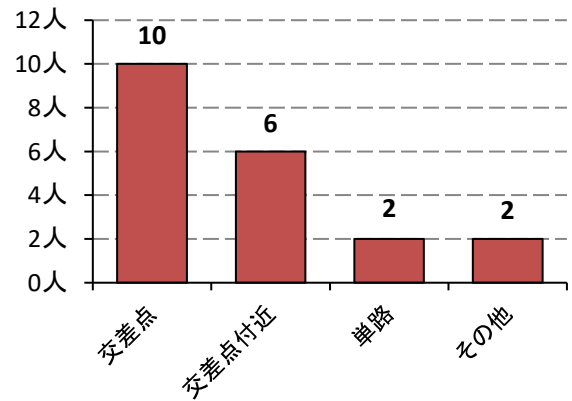
### (2) 時間帯別



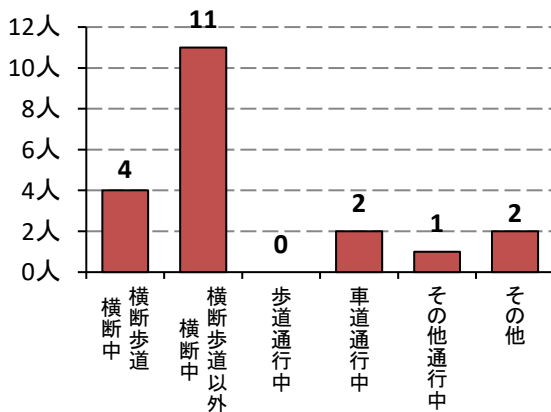
### (3) 路線別



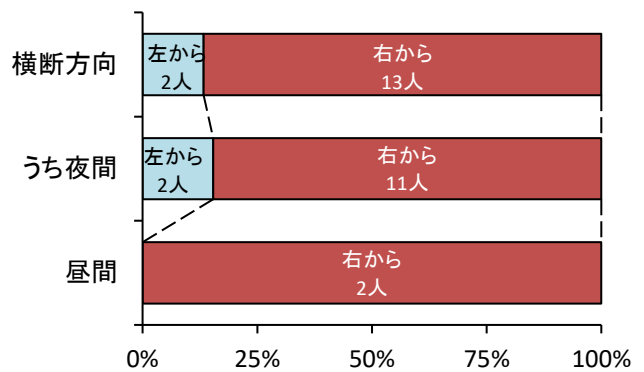
### (4) 道路形状別



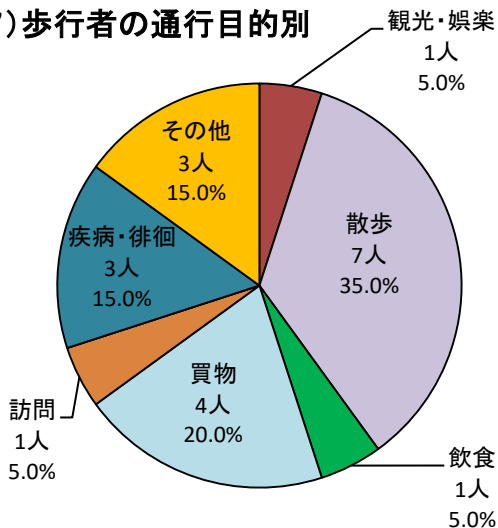
### (5) 歩行者の行動類型別



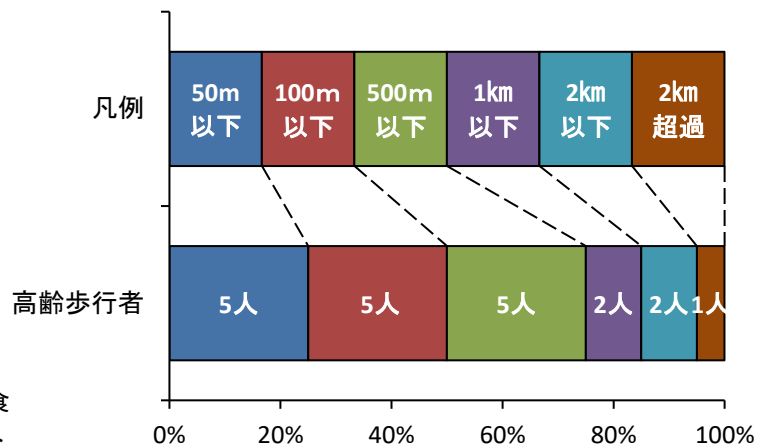
### (6) 運転者から見た歩行者の横断方向別



### (7) 歩行者の通行目的別

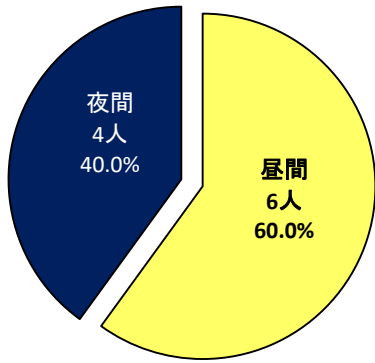


### (8) 事故時の歩行者の自宅からの距離

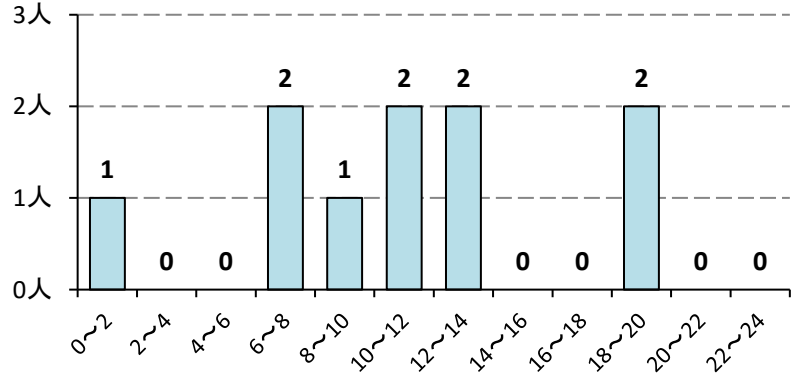


## 7 自転車の死者

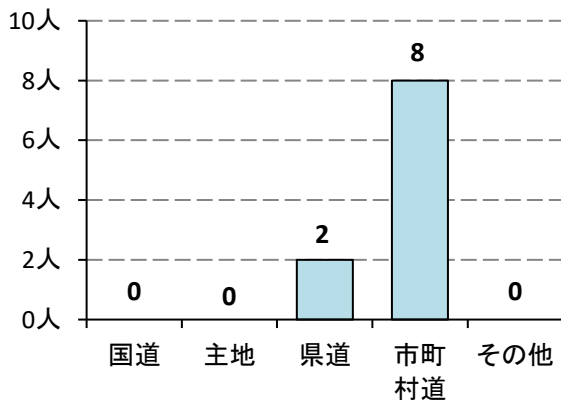
### (1) 昼夜別



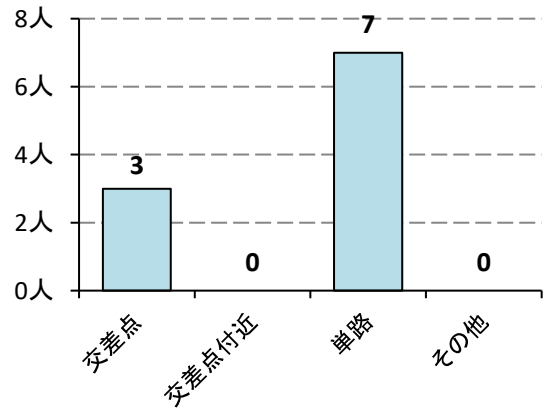
### (2) 時間帯別



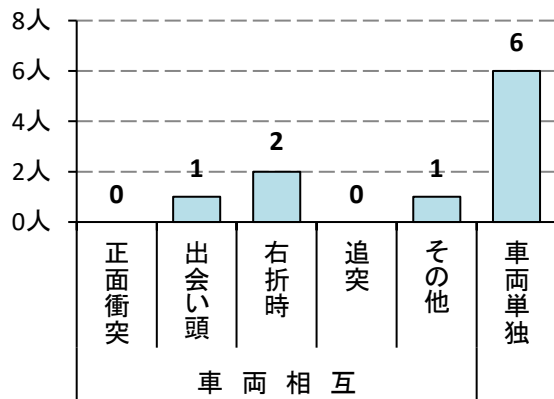
### (3) 路線別



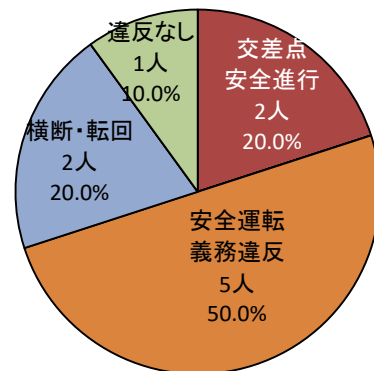
### (4) 道路形状別



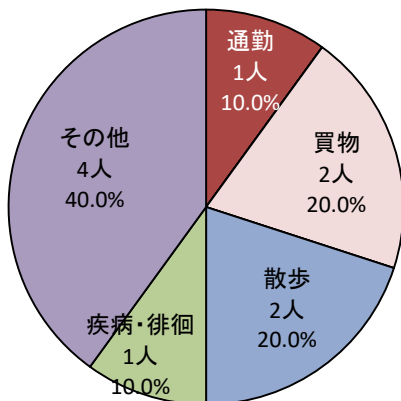
### (5) 事故類型別



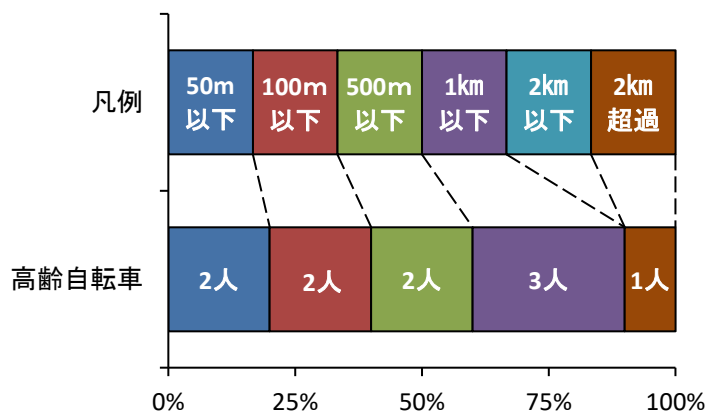
### (6) 自転車の主な事故原因別



### (7) 自転車の通行目的別

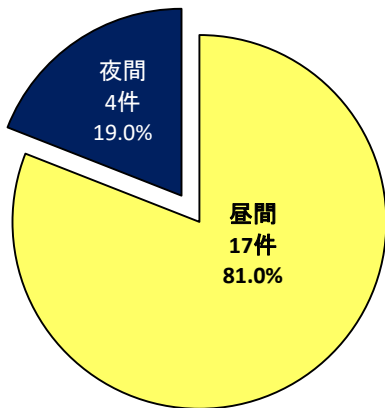


### (8) 事故時の自転車の自宅からの距離

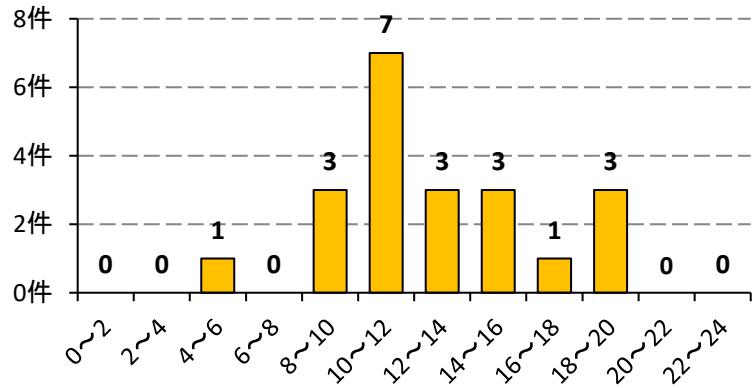


## 8 高齢運転者(主たる原因者)

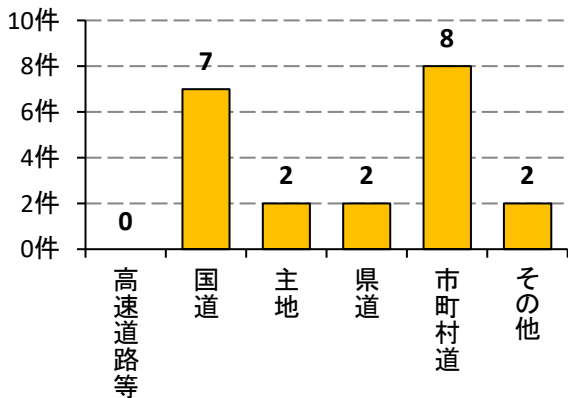
### (1) 昼夜別



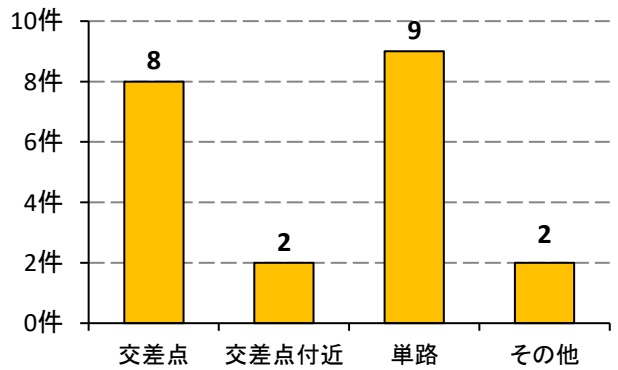
### (2) 時間帯別



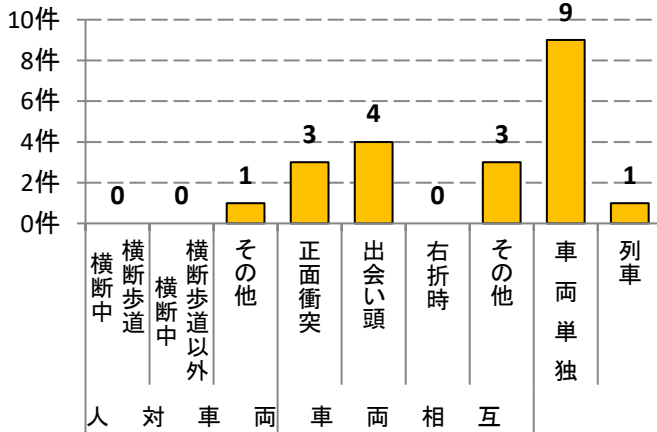
### (3) 路線別



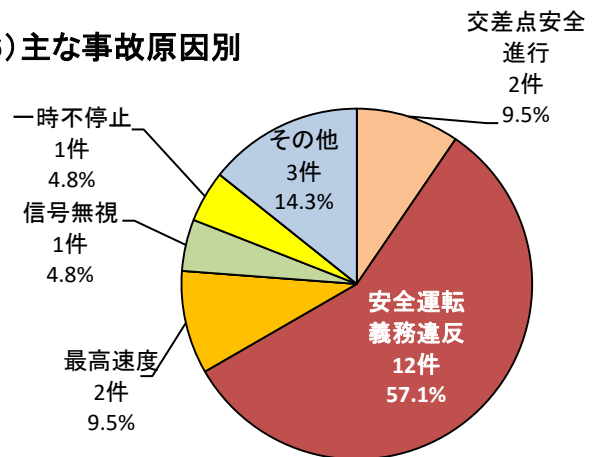
### (4) 道路形状別



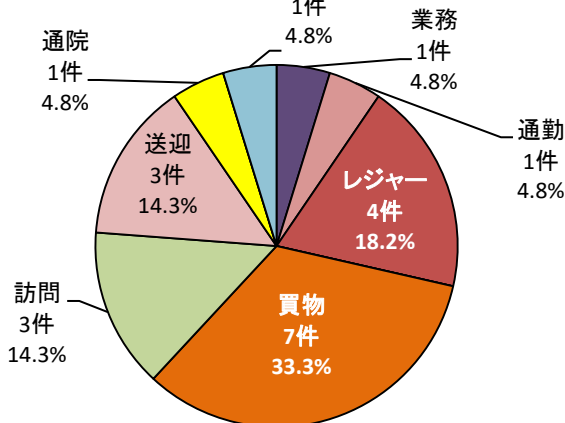
### (5) 事故類型別



### (6) 主な事故原因別



### (7) 通行目的別



### (8) 運転者の年齢層別・男女別

