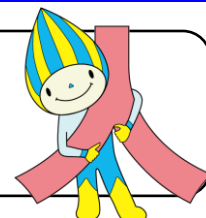


Discriminatory treatment against those who have not been vaccinated for COVID-19 is an absolute NO!

Are you doing things like this?

- Creating an atmosphere where vaccination is obligatory or cannot be refused
- Request submission of reasons for not getting vaccinated
- Request retirement, or to leave work or class due to lack of vaccination



If you run into trouble, don't worry alone, talk to someone!
All information will be kept private. Consultation is free. It may not be available from some IP phones.

Gifu Prefecture Human Rights Consultation Desk

Gifu Prefecture Human Rights Awareness Center 058-272-8252 (Weekdays 9am-5pm)

Topic	Name of Institution	Telephone Number	Hours
Women, Men	Gifu Women's Counseling Center	058-213-2131	9am to Midnight *Weekdays from 6pm to midnight, Saturdays, Sundays, national holidays, and New Year holidays are for domestic violence consultations only
	Gifu Sexual Assault Victims Support Center	058-215-8349	24 hours
	Gifu Prefecture Gender Equality / Women's Activity Support Center	058-278-0858	-General telephone consultation- Monday-Thursday, 1st and 3rd Saturday 9am - 5pm -Telephone consultation for men- 2nd and 4th Friday of every month from 5pm to 8pm
LGBT	Gifu Prefecture Gender Equality / Women's Activity Support Center	058-278-0858	3rd Friday of every month from 5pm to 8pm
Children/youth	Youth SOS Center	0120-247-505	24 hours (Emergencies only from 8pm to 9am the next morning)
	Central Children's Counseling Center	058-201-2111	Weekdays from 8:30 to 17:15
	Seino Children's Counseling Center	0584-78-4838	
	Chuno Children's Counseling Center	0574-25-3111	
	Tono Children's Counseling Center	0572-23-1111	
	Hida Children's Counseling Center	0577-32-0594	
	Children's Counseling Center Abuse Hotline	189	24 hours
	Gifu Children/Family Telephone Counseling Room (Nayami nochi Hare)	0120-76-1152 (Cannot connect from mobile phones) 058-213-8080	Weekdays from 8:45am to 9pm Saturday 8:45am to 5pm
Children's SOS 24	0120-0-78310	24 hours	
Educational Consultation Smile Dial (each educational office)	0120-745-070 (Cannot connect from mobile phones)	Weekdays from 9:30 to 16:15	
People with Disabilities	Gifu Prefecture Discrimination Resolution Center for Persons with Disabilities	058-215-9747	Weekdays 9am to 5pm
Foreigners	Gifu Prefectural Consultation Center for Foreign Residents (inside the International Center)	058-263-8066	Weekdays from 9:30 to 16:30
HIV	Gifu Prefectural Office AIDS Counseling Room	058-272-8270	Weekdays 9am to 5pm
Crime Victims	Gifu Crime Victims Support Center	0120-968-783	Weekdays 10am to 4pm
		058-268-8700	

* Institutions without 24-hour support are not open on public holidays or during the year-end/New Year holidays.

You may also contact your local municipal office.

Everyone's human rights 110 0570-003-110 (nationwide) (Connects to the nearest Legal Affairs Bureau / Regional Legal Affairs Bureau.)
 Women's Human Rights Hotline 0570-070-810 (nationwide)
 Children's Human Rights 110 0120-007-110 (nationwide, toll free)
 Foreign Language Human Rights Counseling Hotline (Telephone Counseling) 0570-090-911 (nationwide)

Hours ©Foreign language human rights consultation hotline / Weekdays 9am to 5pm ©Others / Weekdays 8:30 to 17:15

Use this link for email consultation



For Children Over 12 Years Old and Their Parents

☆ Everyone 12 years old and over who wants to be vaccinated can receive the coronavirus vaccine.

<Cf.: Vaccine reservations status in Gifu Prefecture> As of September 27, 2021

- Vaccinated or have appointment for vaccination : 85.8% of those eligible
- Vaccination plan rate for municipalities in the prefecture: 88.0%
- Vaccine supply : 89.8% * All applicants are expected to be able to receive the vaccination

(Remarks) 32nd Gifu Prefectural New Coronavirus Task Force / 44th Task Force Meeting (held on September 28, 2021) From "Document 2"

☆ Vaccination for COVID-19 is not compulsory. Those who wish to receive the vaccination should understand the effects of vaccination and the risk of side effects, and then get the vaccination of their own volition.

Please do not discriminate against those who have not been vaccinated, or do anything to put pressure on them.

Toward thorough suppression of the fifth wave of new coronavirus infection

Joint message from the governors of Aichi, Gifu and Mie prefectures

- To overcome the greatest crisis ever - Excerpt

To create a society free of prejudice and discrimination

- In addition to infected persons, those belonging to organizations where someone has been infected, medical workers, people returning home from outside the prefecture, etc., should not suffer discrimination/prejudice, or unprovoked discrimination/prejudice from hoaxes and gossip on social media.
- Vaccination is carried out with the consent of the applicant, so please do not under any circumstances force the vaccination on the workplace or those around you, or do anything that leads to slander, prejudice or discrimination against those who have not been vaccinated.

August 26, 2021

Hideaki Omura, Governor of Aichi Prefecture

Hajime Furuta, Governor of Gifu Prefecture

Eikei Suzuki, Governor of Mie Prefecture

Tell me, Minamo! Eliminating doubts about the COVID-19 vaccine!

Q1 Where can I be vaccinated?

A As a general rule, you can go to a medical institution or designated inoculation venue in the municipality where you have registered your residence. For details, please check the information you have received from the municipality.

Q2 How effective is it?

A It has been reported that two inoculations have a preventive effect of about 95%, but it is by no means 100%. (Influenza vaccine is about 40% -60%).

Q3 How safe is the vaccine?

A After inoculation, side effects such as pain at the injection site and fever may occur, but most will recover within a few days. The frequency of anaphylaxis, which is a serious side effect, is reported to be about 5 out of 1 million with the Pfizer vaccine, but medicines are on hand at the vaccination venue so that it can be dealt with immediately.

Q4 Do I have to get vaccinated?

A Vaccination is not compulsory and will only be given with consent. You will be asked to receive the vaccination on your own volition after understanding both the preventive effect of the vaccination and the risk of side effects. Also, do not force people in your workplace or those around you to receive vaccinations, and do not discriminate against those who have not received vaccinations.

- Regarding the dates and times for vaccination, venues, vaccination coupons, etc.
Municipal Vaccine Call Center



- Regarding effectiveness and side effects
Gifu Vaccine Call Center
TEL058-272-8222
(Hours) 9am to 9pm (including Saturdays, Sundays, and holidays)



☆ It is not yet known to what degree vaccination can prevent infection.

☆ Whether you have been vaccinated or not, continue infection control measures such as washing your hands, avoiding crowds, and ensuring adequate ventilation.

(Remarks) From Gifu Prefecture "Land of Clear Water Gifu Minamo Newsletter" (September 2021 issue).

Q What kind of effect (prevention of symptoms, duration of effect) does the coronavirus vaccine being used in Japan have?

In Japan, the Pfizer, Takeda/Moderna, and AstraZeneca (*) vaccines are currently approved and are regulated vaccinations under the Immunization Law.

(*) AstraZeneca's is generally reserved for those over 40 years old (over 18 years old if there is a particular need such as allergies to the ingredients contained in other vaccines). At this time, there is limited availability of AstraZeneca, and most are vaccinated with Pfizer or Takeda/Moderna.

Prior to regulatory approval, clinical trials were conducted overseas to confirm the preventive effect of each vaccine. The Pfizer vaccine prevents symptoms about 95%, and Takeda/Moderna prevents about 94%. AstraZeneca's vaccine has been confirmed to have a preventive effect of about 70%, based on the results of a meta-analysis of multiple clinical trials conducted overseas.

Regarding the prevention of sever symptoms, the number of cases in clinical trials conducted before regulatory approval was not sufficient, and caution is required in interpretation. Results of clinical trials and information collected after approval suggest an ability to prevent severe symptoms, so such an effect is expected.

None of the vaccines have been confirmed to be effective in preventing infection in pre-approval clinical trials, but data is currently being accumulated as these vaccines are given in many countries and regions. Studies conducted in some countries suggest that people who have been vaccinated with the mRNA (messenger RNA) vaccines have fewer infections (both symptomatic and asymptomatic) than those who have not.. Unlike clinical trials, these data should be interpreted with caution, as bias is likely to occur because it is difficult to create a control group under the same conditions. We need to watch various for the results of future research. In addition, considering that the vaccine's preventive effect is not 100%, it is important to continue infection control after vaccination.

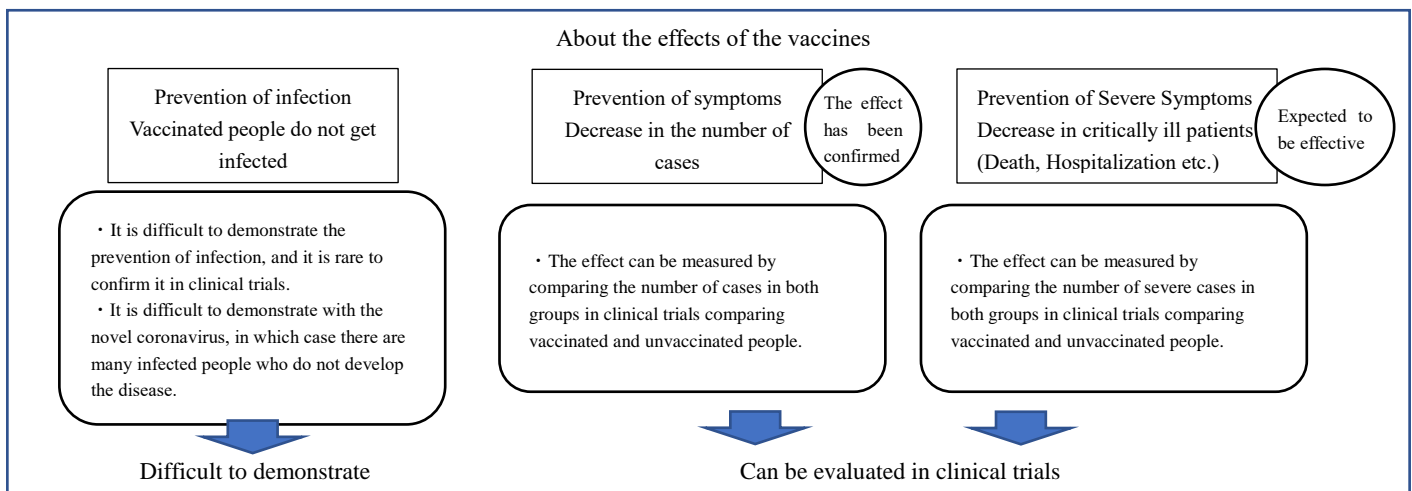
Regarding the duration of the effect, in the case of Pfizer's vaccine, for example, according to the results of follow-up surveys conducted overseas after clinical trials, it was reported that the prevention of symptoms was 91.3% 6 months after the second dose. In the case of the Takeda/Moderna vaccine, in the same survey, it was announced that the prevention of symptoms 6 months after the second dose was 90% or more. It is necessary to continue to look at the various data that will be accumulated in the future.

Click here for detailed information on vaccine efficacy, etc. ↓

Vaccine Subcommittee MHLW Search

(Remarks) From "New Corona Vaccine Q&A" published by the Ministry of Health, Labor and Welfare (R3.9.24).

<https://www.cov19-vaccine.mhlw.go.jp/qa/>



(Remarks) Ministry of Health, Labor and Welfare 68th Health and Welfare Council Vaccination and Vaccine Subcommittee Vaccine Reaction Study Subcommittee (held on R3.9.10) From "Reference Material 5".

https://www.mhlw.go.jp/stf/shingi2/0000208910_00030.html

Q What are some of the side effects that have been seen so far?

The main side effects are pain at the injection site, headache, joint and muscle pain, fatigue, chills and fever. Also, rare and serious side effects include shock and anaphylaxis. Since this vaccine is a new type of vaccine, there is a possibility of symptoms that are as yet unknown. If you notice any symptoms of concern after inoculation, consult your physician or the doctor who gave the vaccination. Although very rare, mild myocarditis and pericarditis after vaccination have been reported. If you experience symptoms such as chest pain, palpitation, shortness of breath, or swelling within a few days after vaccination, seek medical attention quickly.

(Remarks) From "COVID-19 Vaccine Manual" published by the Ministry of Health, Labor and Welfare (2021.9.24).
https://www.mhlw.go.jp/stf/seisakunitsuite/bunya/vaccine_yoshinhyouetc.html

Click here for more information on adverse reactions from vaccination ↓

Health Science Council, Immunization

Search

Status of suspected side effects by age (frequency of medical institution reports) *As of August 22, 2021

Age	Pfizer Vaccine			Takeda/Moderna Vaccine		
	Reports of suspected side effects	Severe reports	Death reports	Reports of suspected side effects	Severe reports	Death reports
10-19	170	21	0.8	482	38	0
20-29	827	92	2.0	247	22	0.4
30-39	751	81	1.4	127	18	0.7
40-49	557	62	1.3	86	10	0.5
50-59	271	32	2.3	60	12	1.6
60-69	93	19	2.9	84	12	1.1
70-79	65	24	6.9	85	15	1.3
80-	102	56	25.1	56	35	7.0

(Remarks) Ministry of Health, Labor and Welfare 68th Health and Welfare Council Vaccine Subcommittee Vaccine Reaction Study Subcommittee (held on 2021.9.10) From "Reference Material 5".

Frequency of reports per million vaccinations.

https://www.mhlw.go.jp/stf/shingi2/0000208910_00030.html

Comparison of side effects with H1N1 influenza vaccine

	Pfizer Vaccine	Takeda/Moderna Vaccine	H1N1 Influenza Vaccine
	(19,592) 2nd in 2021	(5,584) 2nd in 2021	(22,112) 2009
Fever(above 37.5°C)	38.1%	78.9%	3.1%
Inoculation site reactions	90.7%	90.3%	69.9%
Redness	15.9%	26.3%	60.1%
Pain	89.5%	86.3%	43.8%
Swelling	14.1%	20.4%	36.0%
Hotness	19.0%	32.7%	28.2%
Itching	11.9%	13.7%	6.7%
Generalized symptoms	75.3%	86.6%	26.7%
Fatigue	68.8%	81.9%	19.0%
Headache	53.1%	66.6%	14.1%
Runny nose	14.4%	12.1%	10.4%

(Remarks) Ministry of Health, Labor and Welfare 68th Health and Welfare Council Vaccine Subcommittee Vaccine Reaction Study Subcommittee (held on 2021.9.10) From "Reference Material 2".

The itching of H1N1 influenza is moderate or higher.

Trends in new COVID-19 infections (Gifu prefecture and national)

Trends in the COVID-19 infections (unit: 1)

	Gifu Prefecture (as of September 16, 2021)		National (as of September 15, 2021 6pm)	
	Positive tests	Deaths	Positive tests	Deaths
Under 10 years old	1,119	0	84,121	0
10-19	2,230	0	163,115	1
20-29	4,265	0	403,419	16
30-39	2,536	0	264,806	50
40-49	2,659	2	250,474	171
50-59	2,116	6	200,304	444
60-69	1,142	15	99,378	1,132
70-79	916	59	74,944	3,256
80 and over	829	126	70,476	8,778

(Remarks) From the Ministry of Health, Labour and Welfare published data "Domestic Trends in COVID-19 Infections" and Gifu Prefecture open data catalog site.

The number of positive tests in Gifu Prefecture is for tests in Gifu. National figures are provisional.

<https://www.mhlw.go.jp/stf/covid-19/kokunainohasseijoukyou.html>

Relief system for post-vaccination health damage

Vaccination can cause health problems (such as illness or disability). Although extremely rare, it cannot be completely eliminated, and there is a relief system in place.

Under the Vaccination Law (*) you can receive relief (medical expenses, disability pension benefits, etc.) if your health is damaged by the COVID-19 vaccines, too.

Please consult with your local municipality regarding the application procedures.

(*) If the Minister of Health, Labor and Welfare certifies that the health damage is due to receiving the vaccination, your local municipality will provide the benefits. A national disease and disability certification committee composed of experts in vaccines, infectious disease, medicine, and law will judge the causal relationship.

For more information on the post-vaccination health hazard relief system, please see the Ministry of Health, Labor and Welfare website↓

(Remarks) From the material published by the Ministry of Health, Labor and Welfare "Post-vaccination Cautions" (as of 2021.9.24).

https://www.mhlw.go.jp/stf/seisakunitsuite/bunya/vaccine_yoshinhyouetc.html

(Reference) National "response to foreign matter contamination in the COVID-19 vaccine"

<Quoted from the Ministry of Health, Labor and Welfare website (as of 2021.9.24)>

https://www.mhlw.go.jp/stf/seisakunitsuite/bunya/vaccine_tmamiawase.html

Multiple vaccination sites have reported foreign material mixed in with unused COVID-19 vaccines.

At this point, a total of three lots, one in which stainless steel has been detected and two others for which the risk of contamination cannot be ruled out, have already been suspended or voluntarily recalled.

In addition, at some vaccination sites, rubber stopper fragments have been found inside vials from lots that have not been suspended for use. At the discretion of the vaccination site, some lots have been suspended from use, but it is ok to use the vaccine if it is thought that part of the rubber lid has become mixed in during the manufacturing process or upon inserting the syringe.

The Ministry of Health, Labour and Welfare will continue to work to ensure that everyone who can receive vaccination, and those waiting, can do so safely and promptly.

For more information on the response to the foreign matter issue, Please see the Ministry of Health, Labor and Welfare website↓

<Multilingual materials about the COVID-19 vaccines>

https://www.mhlw.go.jp/stf/seisakunitsuite/bunya/vaccine_tagengo.html

★ For more information on the COVID-19 vaccines,
Please see the Ministry of Health, Labor and Welfare website



Instructions for the COVID-19 vaccination

About the COVID-19 vaccine

This vaccine is part of the national and local governments' vaccination program for COVID-19 (SARS-CoV-2). This vaccine is covered by public funds and is available free of charge to those who wish to receive it. This vaccine is intended for people aged 12 years and older.

Effectiveness of the vaccine and administration method

The vaccine that will be given this time is made by Pfizer. The vaccine prevents the onset of COVID-19.

It has been found that fewer people who have received the vaccine have developed COVID-19 than those who have not received it. (The effectiveness in preventing the onset of disease has been reported to be approximately 95%.)

Sales name	Comirnaty [®] intramuscular injection
Efficiency and effects	Prevention of infectious disease caused by SARS-CoV-2
Vaccination frequency and interval	Two times (usually three weeks apart) *Intramuscular injection
Inoculation target	People aged 12 years and older (Efficacy and safety for people under 12 years of age is not yet clear.)
Inoculation amount	0.3 mL per dose, total of two doses

- After the first vaccination, a second vaccination is usually given after three weeks. (Please get the second vaccination as soon as possible if more than 3 weeks have elapsed after the first vaccination.)
- If you received this vaccine for your first dose, your second dose should be the same vaccine in principle.
- It is believed that sufficient immunity is not achieved until about 7 days after the second dose of this vaccine has been administered. Also, please be aware that vaccination cannot completely prevent infection. You should take appropriate infection prevention measures regardless of whether or not you have received the vaccine.

People who cannot receive the vaccine

This vaccine cannot be administered to people for which the following apply. Be sure to tell the doctor during the pre-vaccination consultation if you think any of the following apply for you.

- People with obvious fever (*1)
- People suffering from serious acute illness
- People with a history of severe hypersensitivity (*2) to any of the ingredients of this vaccine
- People other than those described above who have conditions that make it inappropriate for them to receive the vaccine

(*1) Obvious fever is usually defined as 37.5°C or higher. However, this does not necessarily apply to cases in which it is judged as a fever in light of the normal body temperature, even if the temperature is below 37.5°C.

(*2) Anaphylaxis and multiple symptoms suggestive of anaphylaxis, including generalized skin and mucous membrane symptoms, wheezing, dyspnea, tachycardia, and hypotension.

People who need to be careful about getting vaccinated

Those who have any of the following conditions should be cautious about receiving this vaccine. If you think this applies to you, be sure to tell the doctor during the pre-vaccination consultation.

- People on anticoagulant therapy, people with thrombocytopenia or coagulation disorders
- People who have been diagnosed with immunodeficiency in the past, or people who have close relatives with congenital immunodeficiency
- People with underlying medical conditions such as heart, kidney, liver, blood disorders, or developmental disorders
- People who received vaccines in the past and experienced symptoms suggesting an allergy such as fever or generalized rash within two days after vaccination
- People who have had convulsions in the past
- People who may be allergic to the ingredients of this vaccine.

If you are pregnant or may be pregnant, or are breast-feeding, be sure to inform the doctor during the pre-vaccination consultation.

This product contains an additive that has never been used in a vaccine before. If you have had hypersensitivity or allergic reactions to drugs in the past, be sure to inform the doctor during the pre-vaccination consultation.

(Continue to the reverse side)

What to do after receiving the vaccine

- After receiving this vaccine, please wait at the facility where you received the vaccine for at least 15 minutes (at least 30 minutes for those who have experienced severe allergic symptoms including anaphylaxis in the past, or those who have felt sick or fainted, etc.), and if you feel unwell, please contact your doctor immediately. (This makes it possible to respond to sudden side effects.)
- The injected area should be kept clean. Although bathing on the day of vaccination is not a problem, please do not rub the injected area.
- Please refrain from strenuous exercise on the day of the procedure.

Side Effects

- The principal side effects include pain in the injected area, headache, joint and muscle pain, tiredness, chills, and fever. Rare and serious side effects include shock or anaphylaxis. Because this vaccine is a new type of vaccine, there is a possibility that it may cause symptoms that have not been clarified so far. If you notice any concerning symptoms after vaccination, consult your vaccinating doctor or family doctor.
- Although extremely rare, mild cases of myocarditis and pericarditis have been reported after vaccination.* If you experience symptoms such as chest pain, palpitations, shortness of breath, or swelling within a few days after vaccination, please visit a medical institution immediately.

*This is more common after the second vaccination than the first vaccination, and tends to be more common among younger people, especially men.

About the Relief System for Injury to Health with Vaccination

Vaccinations can cause health problems (illness or disability). Although this is extremely rare, the risk cannot be eliminated, and a relief system has been established for this reason.

In the case of health damage as a result of the vaccine from the COVID-19 vaccine, relief (medical expenses, disability pension benefits, etc.) is also available under the Immunization Act. Please consult with the municipality where your residence is located regarding the procedures required for application.

About the COVID-19 infection

When an infection caused by SARS-CoV-2 develops, symptoms similar to those of a common cold are seen, such as fever and cough. While many people recover from the disease with mild symptoms, in severe cases, pneumonia symptoms such as breathing difficulties worsen and may even lead to death.

Characteristics of the COVID-19 vaccine (vaccine manufactured by Pfizer) to be administered this time

This drug is a messenger RNA (mRNA) vaccine, and it is a formulation in which the mRNA, which is the blueprint for the spike protein of SARS-CoV-2 (a protein necessary for the virus to enter human cells), is encased in a lipid membrane. When mRNA is taken into human cells through inoculation with this drug, viral spike proteins are produced in the cells based on the mRNA, and neutralizing antibodies against the spike proteins and cellular immune responses are induced, which is thought to prevent infections caused by SARS-CoV-2.

This drug contains the following ingredients.

Active ingredient	◇ Tozinameran (mRNA encoding the full-length spike protein that binds to the human cell membrane)
Additives	◇ ALC-0315: [(4-hydroxybutyl)azanediyl]bis(hexane-6,1-diyl)bis(2-hexyldecanoate) ◇ ALC-0159: 2-[(polyethylene glycol)-2000]-N,N-ditetradecylacetamide ◇ DSPC: 1,2-Distearoyl-sn-glycero-3-phosphocholine ◇ Cholesterol ◇ Potassium chloride ◇ Monobasic potassium phosphate ◇ Sodium chloride ◇ Dibasic sodium phosphate dihydrate ◇ Sucrose

For more information on the COVID-19 vaccine, please visit the Ministry of Health, Labor and Welfare website.

MHLW COVID-19 vaccine

Search



If you are unable to view the website, please contact your local municipality.

Instructions for the COVID-19 vaccination

About the COVID-19 vaccine

This vaccine is part of the national and local governments' vaccination program for COVID-19 (SARS-CoV-2). This vaccine is covered by public funds and is available free of charge to those who wish to receive it. This vaccine is intended for people aged 12 years and older.

Effectiveness of the vaccine and administration method

The vaccine administered at this time is manufactured by Takeda/Moderna. This vaccine prevents the onset of COVID-19.

It has been found that fewer people have developed COVID-19 among those who have received the vaccine than those who have not received it. (The effectiveness in preventing the onset of disease has been reported to be approximately 94%.)

Sales name	Moderna COVID-19 vaccine intramuscular injection
Efficiency and effects	Prevention of infectious disease caused by SARS-CoV-2
Vaccination frequency and interval	Two times (usually four weeks apart) *Intramuscular injection
Inoculation target	People aged 12 years and older (Efficacy and safety for people under 12 years of age is not yet clear.)
Inoculation amount	0.5 mL per dose, total of two doses

- Four weeks after the first vaccination, a second vaccination is usually received. (If a period of more than four weeks has elapsed after your first vaccination, please get your second vaccination as soon as possible.)
- If you received this vaccine for your first dose, your second dose should be the same vaccine in principle.
- Clinical trials have confirmed that sufficient immunity is not achieved until about 14 days after the second dose of this vaccine has been administered. Also, please aware that vaccination cannot completely prevent infection. You should take appropriate infection prevention measures regardless of whether or not you have received the vaccine.

People who cannot receive the vaccine

This vaccine cannot be administered to people to whom any of the following circumstances apply. If you think any of the following circumstances apply to you, be sure to inform the doctor during the pre-vaccination consultation.

- People with obvious symptoms of fever (*1)
- People suffering from serious acute illness
- People with a history of severe hypersensitivity (*2) to any of the ingredients of this vaccine
- People who have another condition making it inappropriate for them to receive the vaccine

(*1) An obvious symptom of fever is usually defined as a temperature of 37.5°C or higher. However, this standard does not necessarily apply if fever has been diagnosed in comparison to normal body temperature, even if the temperature reading is below 37.5°C.

(*2) Anaphylaxis and multiple symptoms suggestive of anaphylaxis, including generalized skin and mucous membrane symptoms, wheezing, dyspnea, tachycardia, hypotension, etc.

People who need to be cautious about getting vaccinated

Those to whom any of the following circumstances apply should be cautious about receiving this vaccine. If you think any of the following circumstances apply to you, be sure to inform the doctor during the pre-vaccination consultation.

- People on anticoagulant therapy, people with thrombocytopenia or coagulation disorders
- People who have been diagnosed with immunodeficiency in the past, or people who have close relatives with congenital immunodeficiency
- People with underlying medical conditions such as heart, kidney, liver or blood disorders, or developmental disorders
- People who, after receiving vaccines in the past, have experienced symptoms indicative of an allergy, such as fever or generalized rash, within two days of vaccination
- People who have experienced convulsions in the past
- People who may be allergic to the ingredients of this vaccine

If you are pregnant, may be pregnant, or are breast-feeding, be sure to inform the doctor during the pre-vaccination consultation.

This pharmaceutical product contains an additive that has never been used in a vaccine before. If you have had hypersensitivity or allergic reactions to drugs in the past, be sure to inform the doctor during the pre-vaccination consultation.

(Continue to the reverse side)

What to do after receiving the vaccine

- After receiving this vaccine, please wait at the facility where you received the vaccine for at least 15 minutes (at least 30 minutes for those who have experienced severe allergic symptoms after vaccination in the past, including anaphylaxis, feeling sick, fainting, etc.). If you feel unwell, please contact your doctor immediately. (This makes it possible to respond to any sudden onset of side effects.)
- The injected area should be kept clean. Although bathing on the day of vaccination is not a problem, please do not rub the injected area.
- You can go about your life as normal, but please refrain from any strenuous exercise, excessive drinking, etc.

Side effects

- The principal side effects include pain in the injected area (*1), headaches, joint and muscle pain, fatigue, chills, fever, and so on. Although rare, serious side effects can include shock and anaphylaxis. As this vaccine is a new type of vaccine, it may cause unprecedented symptoms that have not yet been identified. If you notice any concerning symptoms after vaccination, consult your vaccinating doctor or family doctor.
(*1) Many people feel pain the next day, rather than immediately after inoculation. Pain and swelling may occur even after a week or more has elapsed since inoculation.
- Although extremely rare, mild cases of myocarditis and pericarditis have been reported after vaccination (*2). If you experience symptoms such as chest pain, palpitations, shortness of breath, or swelling within a few days after vaccination, please visit a medical institution immediately.
(*2) This is more common after the second inoculation than the first inoculation, and tends to be more common among younger people, especially men.

About the Relief System for Injury to Health with Vaccination

Vaccinations can cause health problems (including illness or disability). Although this is extremely rare, the risk cannot be eliminated, and a relief system has been established for this reason.

In the case of health damage resulting from the COVID-19 vaccine, relief benefits (such as medical expenses, disability pension benefits, etc.) are available under the Immunization Act. Please consult with the municipality where you reside in regard to the procedures required for application.

About the COVID-19 infection

When an infection caused by SARS-CoV-2 develops, symptoms resembling the common cold, such as fever and cough, may be evident. While many people recover from the disease with only mild symptoms, in severe cases, pneumonia-like symptoms such as breathing difficulties can develop, and may even lead to death.

Features of the COVID-19 vaccine (vaccine manufactured by Takeda/Moderna) to be administered this time

This drug is a messenger RNA (mRNA) vaccine. In this formulation, the mRNA, which is the blueprint for the spike protein of SARS-CoV-2 (a protein necessary for the virus to enter human cells), is encased in a lipid membrane. When mRNA is taken into human cells through inoculation with this drug, viral spike proteins are produced in the cells based on the mRNA, and neutralizing antibodies against the spike proteins and cellular immune responses are induced, which is thought to prevent infections caused by SARS-CoV-2.

This drug contains the following ingredients.

Active ingredient	◇ CX-024414 (mRNA encoding the full-length spike protein that binds to the human cell membrane)
Additives	◇ SM-102: heptadecan-9-yl 8-((2-hydroxyethyl) (6-oxo-6-(undecyloxy) hexyl) amino) octanoate)
	◇ Cholesterol
	◇ DSPC: 1,2-Distearoyl-sn-glycero-3-phosphocholine
	◇ 1,2-dimyristoyl-rac-glycero-3-methoxypolyethylene glycol-2000 (PEG 2000-DMG)
	◇ Trometamol
	◇ Trometamol hydrochloride
	◇ Glacial acetic acid
	◇ Sodium acetate hydrate
◇ Sucrose	

For more information on the COVID-19 vaccine, please visit the Ministry of Health, Labor and Welfare website.

MHLW COVID-19 vaccine

Search



If you are unable to view the website, please contact your local municipality.